



**EAGLES RAPS**  
TOGETHER WE SOAR

# ANNUAL REPORT JUNE 2017









**EAGLES RAPS INC.  
PRESIDENT'S REPORT  
2016 – 2017**

Another year of trials and tribulations, but we came through it with flying colours thanks to the help of all our friends and the students at Eagles.

Let me start with giving a big thank you to the Rotary Club of Ku ring gai, whose members once again gave us the opportunity to continue working with the kids by continuing to have us as their service to support.

Our good friends on the Eagles RAPS fund-raising committee jumped in and started the ball rolling for the 2017 fund raising event. Although the fundraiser was down a bit on attendees and we didn't raise quite what we were expecting, the feedback I received was that everyone who attended had a great night and a whole lot of fun. Mark "Frosty" Winterbottom attended the night again as our Ambassador and everybody took the opportunity to talk to him and have photos taken.

We have had a lot of opportunities presented to us for our young people this year and Scotty has kept our facebook page updated with great posts about the achievements of the kids as well as other news and if the great supportive comments are anything to go by many people are following us.

There are so many people who deserve a public thank you for the support and effort they have put in to Eagles and help make this group what it is today. There are too many people to mention them all, but I'm going to mention a few. Thank you to Sargent's Pies Foundation, KPMG, BNI and

International Animal Health to name but a few for their generous support, we would not be able to continue this work without you.

With your ongoing support Eagles RAPS Inc. has been able to continue helping kids at risk find themselves and determine a future in their lives. I urge you to read Ben's story following to get an idea of the work being done at Eagles RAPS Inc.

I congratulate all the young people on their achievements, and big congratulations to our three HSC students who will sit their exams this year. It is a huge course and simply finishing it is a major achievement, regardless of the outcome of exams. Also congratulations to Kellyann who completed her Certificate III in Community Services and started on her Certificate III in Business Administration, all within a six month period.

I would also like to thank Sal and Scott for the effort they have put into the kids this year and helping them achieve milestones they would not have reached without your guidance and support. I would also like to thank the Eagles RAPS management Committee for their efforts in steering us in the right direction

Best regards,

Marten Wynd  
President  
Eagles RAPS Inc.



## THE COMMITTEE

### MANAGEMENT COMMITTEE



Marten Wynd – President



Robyn Moir – Secretary



Cathy Dent – Vice-President



Mark Dent – Finance Manager



Sally Wynd – Service Manager



Scott Dent – Education Programmes Manager



## SERVICE MANAGER'S REPORT

2017 marks our 20<sup>th</sup> anniversary as an association and is evidence of three things:

- The commitment and passion of the staff and volunteers,
- The need for the organisation and its programs, and
- The generosity of a community which has supported us with the essential funds to run the programs and ensure our continuity.

Only eight of those twenty years were funded by the government, and yet we have not only survived, but have provided better opportunities to over 2,000 young people through education and individualised support and will continue to do so.

### Financial Position

The Association ended the year with a loss of \$37,814.20. The total income for the year was \$185,551.37 (\$273,561.67 in 2016). The majority of our funding (\$181,134.73) came from fund-raising, while we received \$1,000.00 in Grants, \$100.00 from sale of assets, \$1,661.40 from wage subsidies, \$330.01 miscellaneous income and \$1,198.90 from interest. The grants received was from Stockland Community Grants and is to be used to buy appropriate clothing for our young people to use on gym equipment which was donated by Good 360. Further donations in kind were received from Hallmark who supplied us with shirts for our major fundraiser at Lily's and for our riders in the Bobbin Head Cycle Classic, and Adam Hasler who donated many hours of IT assistance to the organisation.

Total expenses for the year were \$223,365.57 (\$253,835.55 in 2016). Our biggest expense was the Education programme \$185,172.95 (\$179,242.49 in 2016) and total services costs were \$186,350.01 (\$217,171.03 in 2016). Total administration costs were \$30,098.62 (\$26,685.02 in 2016). Our administration costs represented

13.48% of the total expenses and included audit fees of \$1,800.00, depreciation of \$8,329.57, administration salaries of \$5,074.54, insurances of \$8,098.56, subscriptions and memberships (including website and accounting system costs) of \$1,724.93, electricity of \$1,008.88 and vehicle costs of \$1,021.35. Fundraising expenses were \$6,351.04 and financial expenses were \$565.90

Total current assets at 30 June 2017 were \$129,524.58 (\$162,920.25 in 2016) and fixed assets were \$29,488.40 (\$27,658.28 in 2016). Cash at bank totalled \$23,747.21. Debtors were \$100,790.00 and prepaid expenses \$4,987.37. Depreciation for the year totalled \$8,329.57 and write-offs totalled \$63.77.

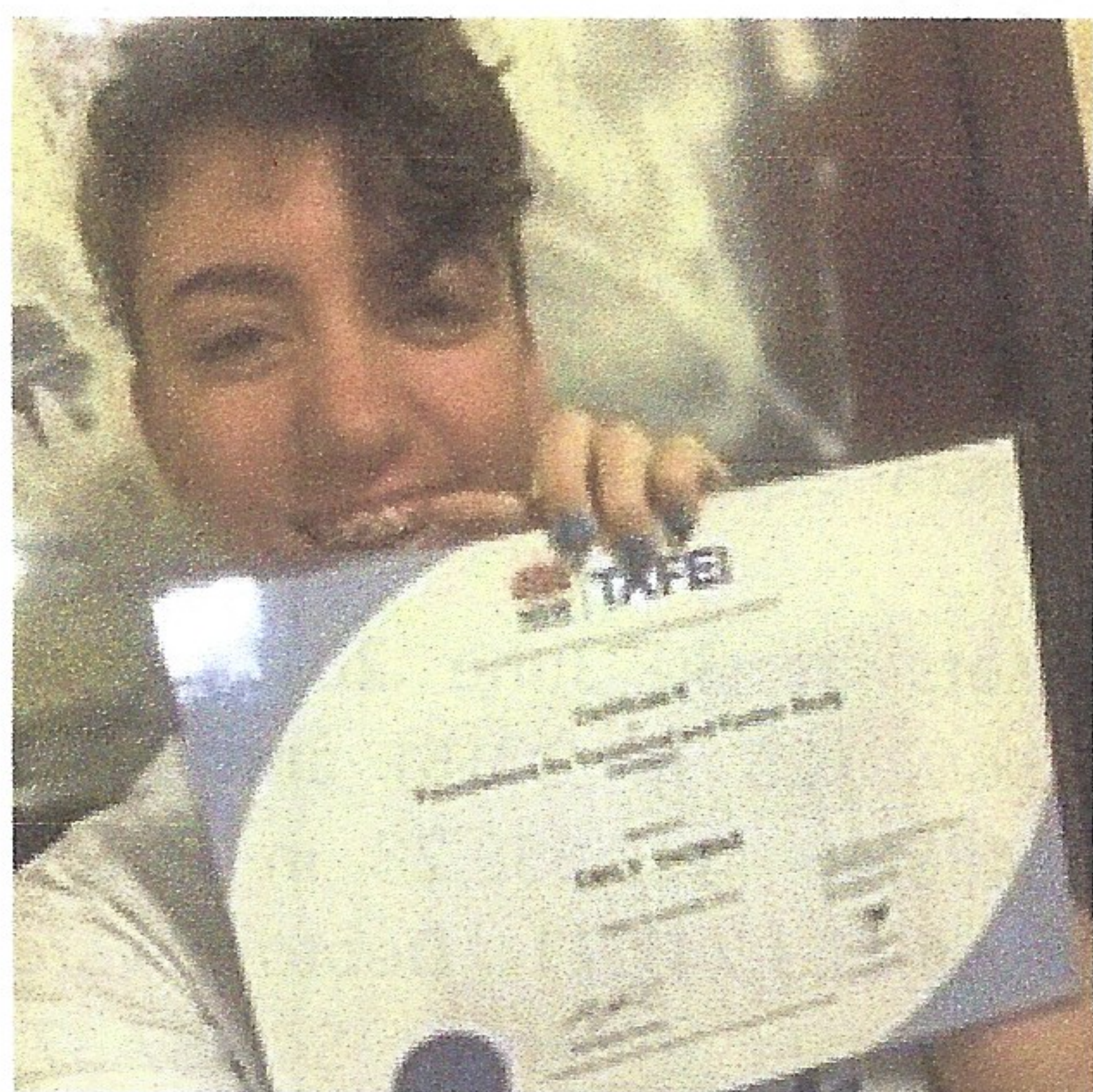
Total liabilities at 30 June 2017 were \$43,374.94 (\$37,126.29 in 2016) which was primarily made up of payroll liabilities of \$38,785.58 and accrued expenses of \$4,288.63.

Total Member's Funds at the end of the year was \$115,638.04 (\$153,452.24 in 2016).



## Education Programme

The Education Programme has seen another good year. The young people just keep on coming. We have had a wonderful group of students this year who have strived and achieved their goals.

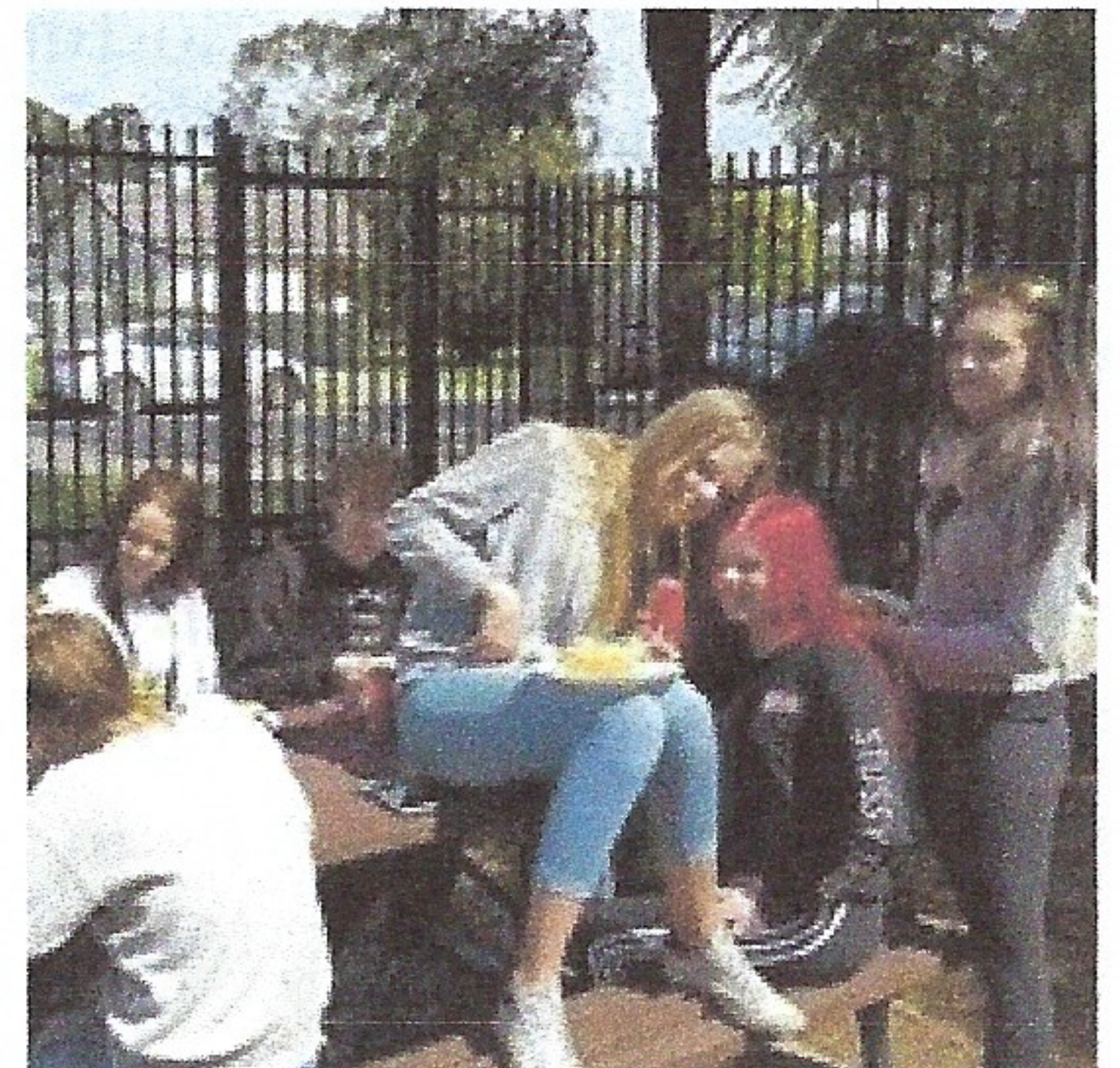


We have three young people who will be sitting their HSC exams at the end of the year, and we wish them all the best. The HSC course is huge, and we

congratulate the young people for “sticking it out” in difficult circumstances. They have already proven themselves as success stories as they have shown the perseverance, tenacity and commitment to continue their studies.

Congratulations are also due to all the year 10 students and the students completing vocational courses. This is not school and you are not compelled to attend. The fact that you have made the choice voluntarily to continue your education is commendable and we look forward to awarding your certificates.

Our quest for sustainability for the programme continues and is making progress. It is our aim to open a child-care centre under the charity’s banner. This will achieve four aims:



- It will provide child care for our young mums in the education programme.
- It will provide work placement for our children’s services students
- It will enable us to work with the next generation and make the beginning of their school days positive.
- All profits will be channelled back into the youth centre and the charitable aims of the association.

We have all the necessary approvals in place to proceed with this business model and are currently looking for suitable premises.





## Networks

We are extremely grateful to be working with many different partners in many different ways.

We continue to enrol our young students into OTEN courses and rely on them for all our resources as we have done since 2003. The partnership has been a lengthy and strong one and we will continue to source courses from them into the future.

Another long and solid one partnership is the one we have with Blacktown City Council. Without their assistance over the years, we simply would not have existed. We thank Mayor Stephen Bali and all from Council for their continued support.



We have been very fortunate to have had the support of two different Rotary Clubs for many years.

The Blacktown Rotary Club has presented some of our students with a Rotary Achievement Certificate for many years now. This year's recipients were from left to right: Emily Thomas, Connie Prendergast, Blake Pynor, Kellyann Dubos, Brodie Davy, Corrina Perry and Bailey Rose.



The Kur-ring-gai Rotary Club has also been extremely supportive over many years in many ways.

They have put us forward as recipients of a share of the Bobbin Head Cycle Classic for the past four years and we will have that privilege once again next year. (More about the "Bobbo" in the fund-raising section below).



As well as this they have brought barbecue lunches to our students, have donated goods in kind and last year arrived on our last day of school for the year with the most glorious cooked Christmas lunch that you could ever wish for.

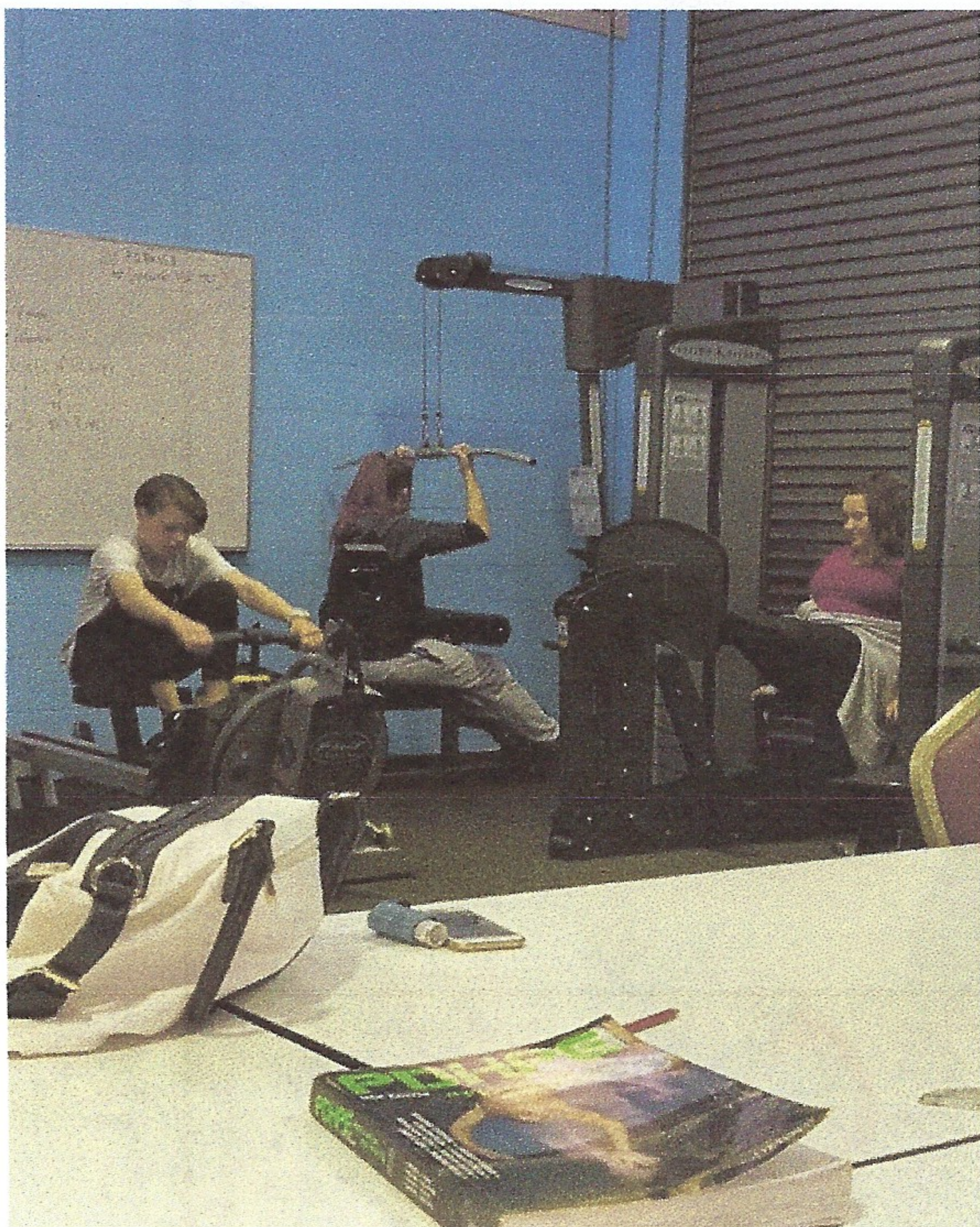


Aaron Sainsbury from Smartline Personal Mortgage Advisors has once again run money-matters workshops with the students, instructing them on many of the pitfalls they could experience as they move into adult life if they are not properly informed. While at times you wonder if the young people are listening to the advice, they have often come back to us later with comments that are evidence that they have learnt a lot from him. Aaron has also assisted us greatly with fund-raising by being a member of our fund-raising board



This year we became members of the Greater Blacktown Business Chamber and have enjoyed participating in the Business After Five meetings. The GBBC also hosted a Golf Day on our behalf to raise funds for the association (more detail in the Fund-raising section below).

Early this year, the Goodman Foundation donated exercise equipment to Eagles and it has had quite a workout from the students. It has assisted us greatly in our GiGa-bite (Get In, Get Active) program. The “bite” of the program includes educating the young people on better nutrition.



We have also received donated goods from Good 360 which have assisted our young people and their families in various ways.

We must also give a thank you to Nathan Smith from Hallmark who has created and donated special-purpose shirts for us for various occasions and events.



Due to the service we provide it is always important that we maintain strong and positive relationships with the local schools. Scott takes the lead in ensuring that schools are “kept in the loop” in regard to students and we have very positive two-way working relationships with most of the schools in the Blacktown Local Government Area and beyond.

It is also important to network with and maintain relationships with other services and agencies in the area in order to provide the best possible outcomes for the young people.

Prime examples of how working together can better assist our young people are the workshops run by the Youth Liaison Officer, Amanda Jones from Blacktown Local Area Command and the immunisations provided to the students by NSW Health. We are grateful to have both attend the service.

Finally, we must acknowledge the contribution that Adam Hasler has made in donating his time and expertise to the association whenever we have required IT assistance. His assistance has been greatly appreciated.



## Fundraising

As per usual, fund-raising has been a big part of the year's activities.

In July 2016, the Beer Buddies held a fund-raising evening for us in Castle Hill which netted a \$5000 profit and in August the Blacktown Masons donated \$13,000 which they had raised on our behalf.

Once again we held a Trivia Night in November. It was held at Blacktown City Council Nirimba room and all present appeared to have enjoyed the evening.

Our major fund-raising event was once again held at Lily's in May. Mark Winterbottom attended and entertainment was provided by Rachel Aracan and Belinda Adams and Rod Junor, along with two of his colleagues performed amazing magic tricks for the crowd.



Three of the students from Eagles also sang their rendition of Graeme Connor's "Being Here" to the delight of the crowd while another student addressed those in attendance.



The event was a success and after an auction held by our local auctioneer, Morris Short, we netted over \$13,000.



Thank you to the Fund-Rising Board for the efforts they put in to make the night a success.



The “Bobbo” was, once again, a very enjoyable day and a very well organised event. Thanks to the Rotary Clubs of Turramurra, St Ives, Wahroonga and, in particular, Ku Ring Gai, for a wonderful day which not only raised money for us, but was a lot of fun.

We were particularly proud of the fact that this year we entered our own team



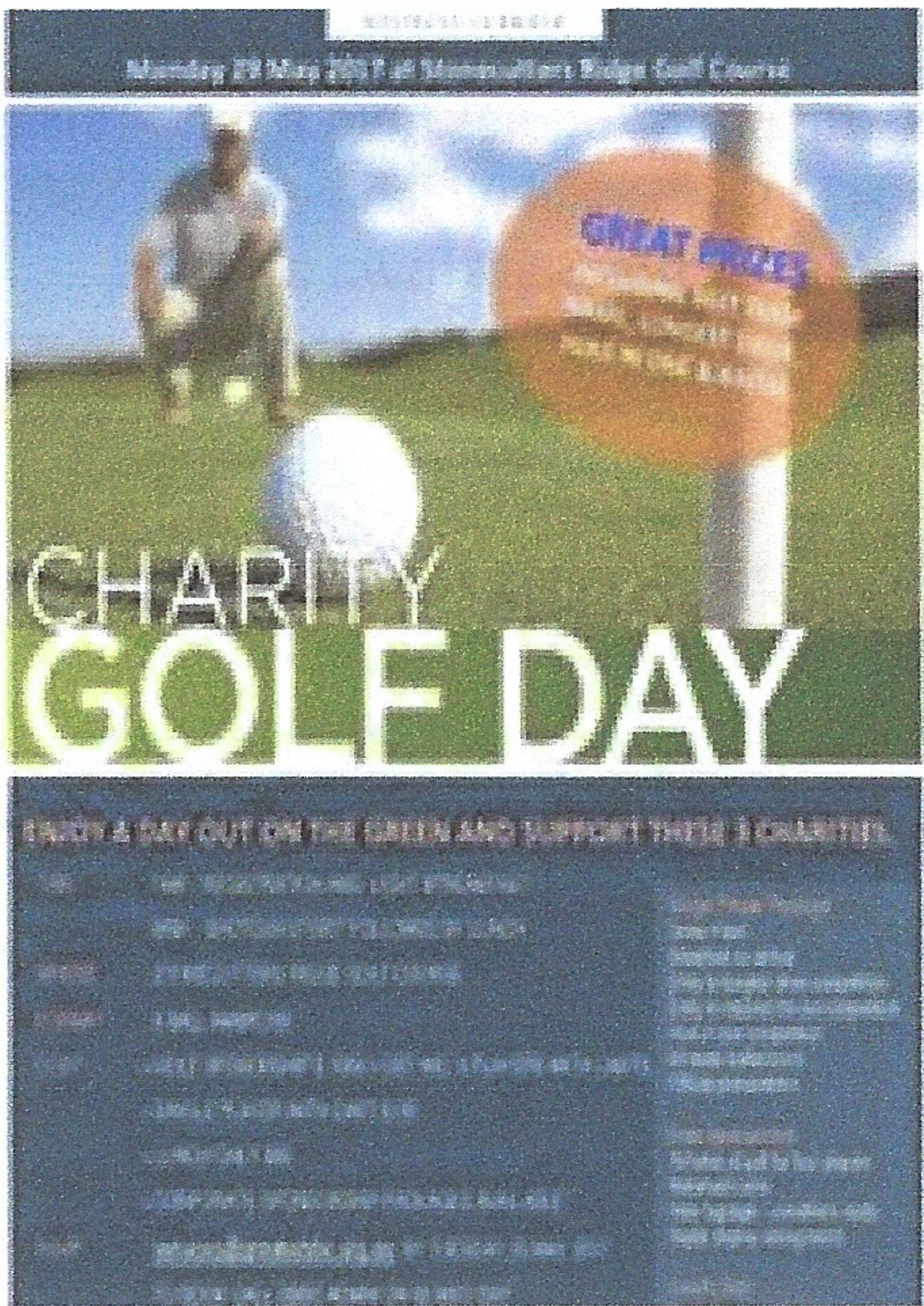
instigated by one of our HSC students. Blake rallied three team mates and added an extra \$2,000 to the kitty by completing a gruelling 80 km ride. The final donation to Eagles was \$20,000.



A big thank you to Aaron, Blake Mark and Matt for their efforts. And a big thank you to the Rotary clubs.



Also in May the GBBC hosted a golf day to raise funds for Eagles. The weather was beautiful, and everybody present enjoyed the day immensely.



We would also like to thank the Stockland Community Fund for their donation to the students.





## THE FUND RAISING BOARD



David Pring



Aaron Sainsbury



Chief Inspector Gary  
Raymond – Retired

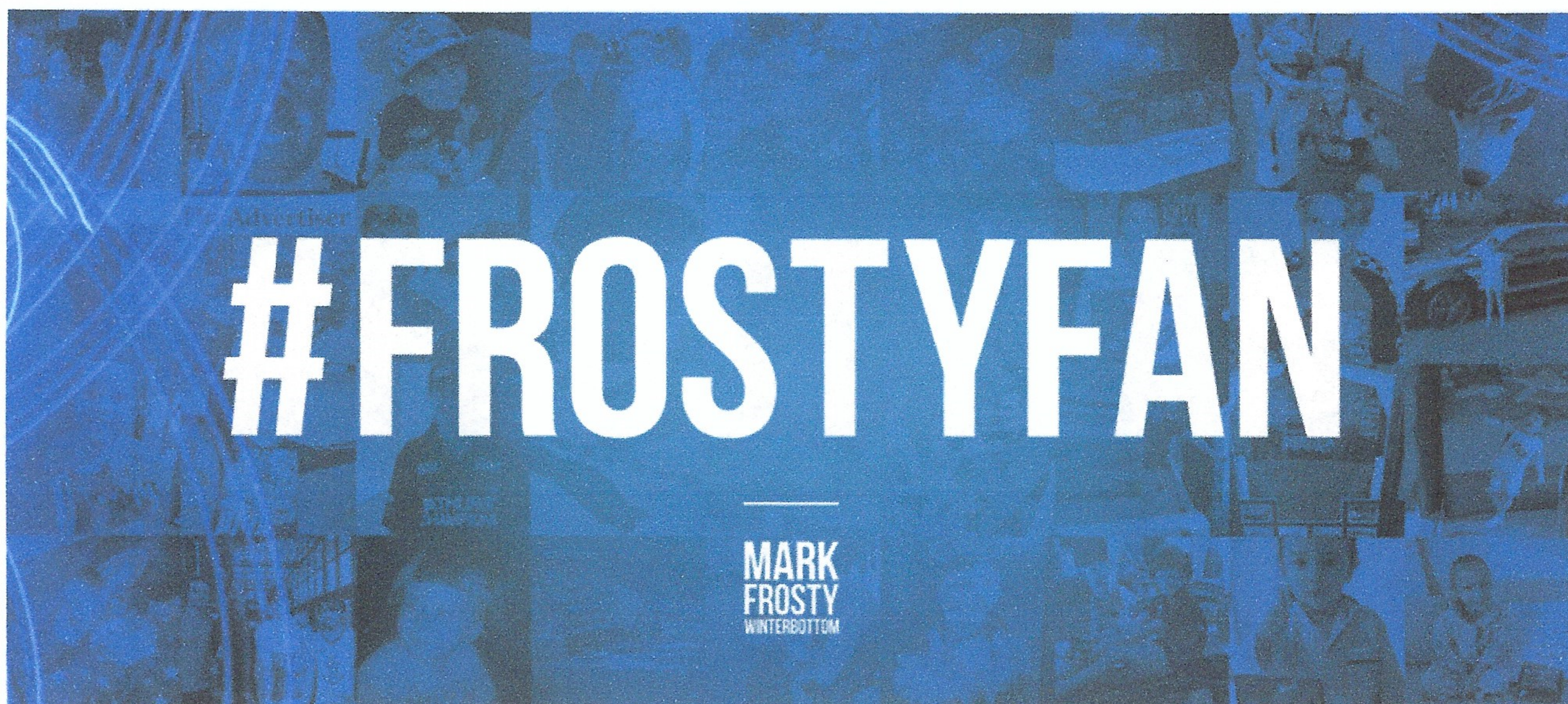


Jason Taggart



Manie





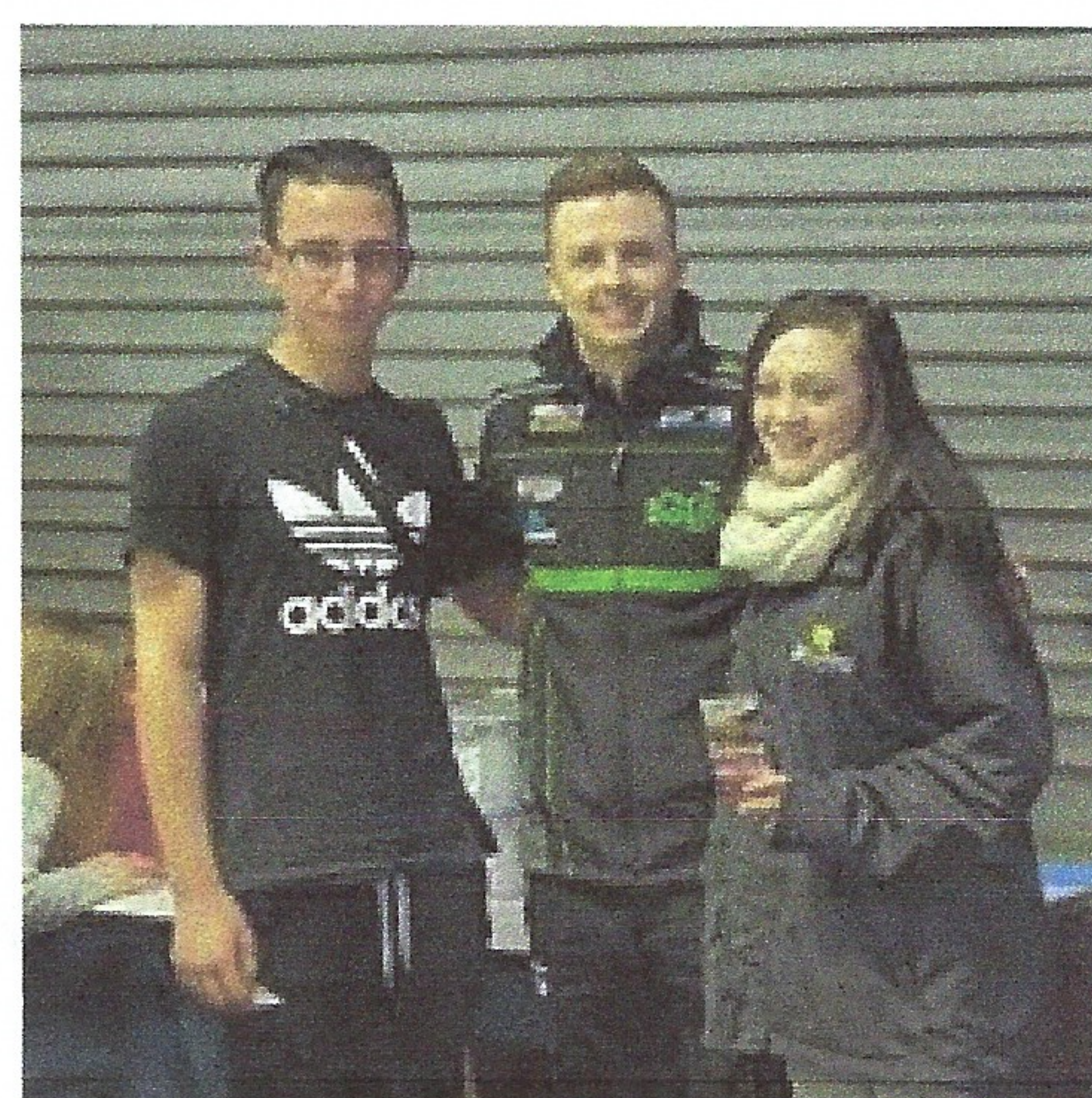
## MARK WINTERBOTTOM



The highlight of the year for the young people is always the visit from Mark Winterbottom and their consequent visit to the Sydney Motorsport Park to watch Frosty race, and this year has been no different.

Mark gives much of his time in a visit to the centre to answer questions from the students, sign their pictures of him and grant photo opportunities. The boys are impressed, and the girls are thrilled.

During their trip to the raceway, Mark's wife Renee goes out of her way to show the students Mark's garage and car.



Mark's ability to relate to the area and the young people is a valuable inspiration and morale-booster to the students.





## The Management Committee and Staff

In its 20<sup>th</sup> year I would like to take the opportunity of thanking Marten for 20 years of service to the organisation without receiving a cent for his efforts. Marten was a founding member, and while holding down a job and raising a family, he has continued to give his spare time to the organisation wherever and whenever required.

Mark has also been a part of the organisation for many years, and almost from inception. He began as a junior member and became a committee member when he turned 18. Thanks for all the years of effort Mark and for looking after the accounts again this year.

Scott began as a junior member as well and has worked hands-on at the youth centre since 2006. His expertise with the young people is exceptional and he has been responsible for all the management and administration of the education programme for some years now. Thanks for your commitment Scott.

Robyn and Cath, although not as hands-on, have been on the fringe for many years carrying out those important functions that the rest of us do not get around to and supporting the organisation wherever they can – always willing to help and efficiently completing any task thrown at them.

It is a management committee that I am proud to work with and I hope to see you all back next year.

Thanks also need to go to our fund-raising board who have put a lot of effort into assisting us with raising the necessary funds to continue supporting the young people. I know that it has taken a lot of time away from your families and we very much appreciate it. We hope that you will be back to assist us again next year.

## Future Plans

2018 is shaping up to be a very interesting year with a lot of changes and challenges in the wind. With the emphasis on STEM (Science, Technology, Engineering and Mathematics) education and changes to the curriculum for twenty-two separate HSC subjects, both Scott and I will have a lot of learning to do ourselves, to be able to facilitate education for the young people. We are however excited about the prospect as the new curriculum at a glance seems to be more relevant for the young people and is designed to lift the education standards of those leaving school. We will also be providing more vocational courses through our programme to better meet the needs of students for whom a HSC is not suitable.

At the same time, establishing a child care centre is a priority. It is a natural progression of what we are trying to achieve with the young people as it enables us to work closely with the entire family construct, achieving better outcomes for the next generation. Approvals are in place for the child care centre to come under the charity banner and all profits will be utilised for the aims and objectives of the association. The only thing we are missing at the moment to continue on this path is the premises from which we will run the child care centre and a few dollars to get it up and running.

This is also an exciting prospect as it would mean sustainability for the organisation and having achieved that, not only do we have more time to put into the young people, but it opens up options of expanding in other directions, e.g. a landscaping business to train up young boys.

We are excited about the year ahead and look forward to where it might lead us in the future.

Sally Wynd  
Services Manager



## EDUCATION PROGRAMS MANAGER'S REPORT

### Introduction

What an incredible year it was. Extremely busy with enrolment numbers once again increasing, the implementation of the GiGA-Bite initiative and exciting development in our vocational options gave us a lot to think about and kept the students very busy.

### Numbers and Trends

Our total student enrolment for the financial year was 108 which was up slightly from the 104 in the previous year. The average period of engagement was down by 5 weeks though, caused by an increase in students who failed to engage strongly and discontinued participation early.

The following can be said of our students for the year 2016 – 2017.

- 74 (69%) Female / 34 (31%) Male
- Average age at time of enrolment: 15
- Age Range 14-23
- Average period of engagement: 26 weeks
- Reasons for disengagement:
  - 17 (16%) Return to Mainstream School
  - 33 (31%) Course completion, Work / Looking for Work
  - 12 (11%) Unknown / Lost contact
  - 
  - 46 (42%) Still engaged
- 15 (14%) ATSI

Our engagement statistics and student population demographic is similar to the previous year. Our population continues to be predominately female, and it is a concern that males are not engaging as well in the program when they first start. Perhaps this a self-propelling problem, where boys do not engage well as they lack male friends in the service. We continue to look for strategies to improve.

### HSC Group

Our sole HSC exam student was Kellyann Dubos, who passed each exam and subject in her HSC, overcoming social issues and a learning disability. It is a truly inspirational achievement. Wanting to work in the community services sector, Kellyann has already completed a CERT III in Community Services this year and is considering her next move.

We have 3 equally inspirational HSC students sitting their exams in October and wish them all the best with the challenges to come.

### Vocational

The vocational arm of our education program was utilised and successful again this year with students studying Early Childhood Education, Community Services and Business Administration. It is very valuable being able to offer this variety of courses and qualifications, helping to increase the employability of our young people.





## Extracurricular

We have been very fortunate in receiving support in many ways from many people this year, making our program more dynamic and varied than ever.

In March this year Goodman Foundation donated us commercial quality gym equipment which we have installed at the Doonside centre for students to use. We implemented the 'GiGA-BITE' program, which stands for 'Get in - Get active' and the 'BITE' referring to our healthy eating program where students are encouraged to take advantage of free fruit and bottled water throughout the day.



We have also been visited weekly by Aaron Sainsbury from Money Smart mortgage brokers, who has conducted financial literacy sessions for our students. This has been an extremely valuable addition to the program as students have taken away advice on topics such as moving out of home, consumer finance, credit cards, credit ratings and motor vehicle expenses.

Our Christmas party this year took a different shape, as it was kindly donated and catered for by our very good friends the Rotary Club of Ku-ring-gai. Students, committee and special guests enjoyed a wonderful traditional Christmas feast, we had our awards ceremony as per usual and it was a great day. Thanks to Rotary Club of Ku-ring-gai for their continued and unwavering support.

## Rotary Awards

Eagles were once again afforded the opportunity to award some of our students with Rotary Certificates for Excellence. Congratulations to

Emily Thomas, Blake Pynor, Corrina Perry, Brodie Davy, Connie Prendergast and Bailey rose for receiving the award, and special mention to Kellyann Dubos who received her second award after being nominated in 2015 also.

It is a really valuable aspect to our program, and a reminder to our students that they don't need to come from rich or perfect backgrounds and circumstances to be able to achieve great things. Congratulations to our students and thanks to the Rotary Club of Blacktown City for providing the opportunity for our kids.

## The Future

Busy! We continue to look for methods and means for self-sustainability, while ensuring our existing programs do not suffer from our ventures. We continue to look at creative ways of engaging at risk young people and adapting the service to meet their needs.

We continue to compliment the program by networking with other services, specifically local police SLO, and NSW health will hold sessions with our students over the next few months.

## Conclusion

The Eagles Education Program is a remarkable living entity, I encourage anyone who is interested in supporting Eagles to pop down, say "hello" and see it for yourself. When you open your mind to understanding the circumstances our students have faced and complications they have endured, it will be a truly inspiring experience.

I have enjoyed this position with Eagles since 2006 and still find myself surprised at the resilience and toughness of our students. Some have been through extraordinarily difficult challenges and still fight on for their well-being and futures. I am equally grateful for those who volunteer their time and resources to ensure the continued existence of our wonderful program.

Scott Dent  
Education Programs Manager



## BEN'S STORY – AN AMAZING TALE OF SUCCESS

We are so proud and delighted for Ben.

We met Ben when he was 14 and hating school, struggling socially but never academically! Ben slowly settled in to the Eagles environment and began to feel comfortable in our unique accepting and caring environment.

Ben completed Year 10 with Eagles, and went on to his HSC, growing in confidence and self-esteem along the way. Ben became a leader and mentor in our school program and joined our committee as a Youth Liaison delegate and later as a full member. He then completed a Cert IV and DIPLOMA in Community Services at Eagles!!

Ben took the huge step to progress into university study in 2014, and last month Ben popped in to let us know he had graduated his degree in Social Work.

Ben is a great friend of ours, always keen to volunteer for our fundraising efforts and anything else we need around the place. Ben is a champion bloke, with a great sense of social justice and fairness, he is going to be a rare asset to our industry for a long time to come.

NEVER underestimate what someone can achieve, given the opportunity.

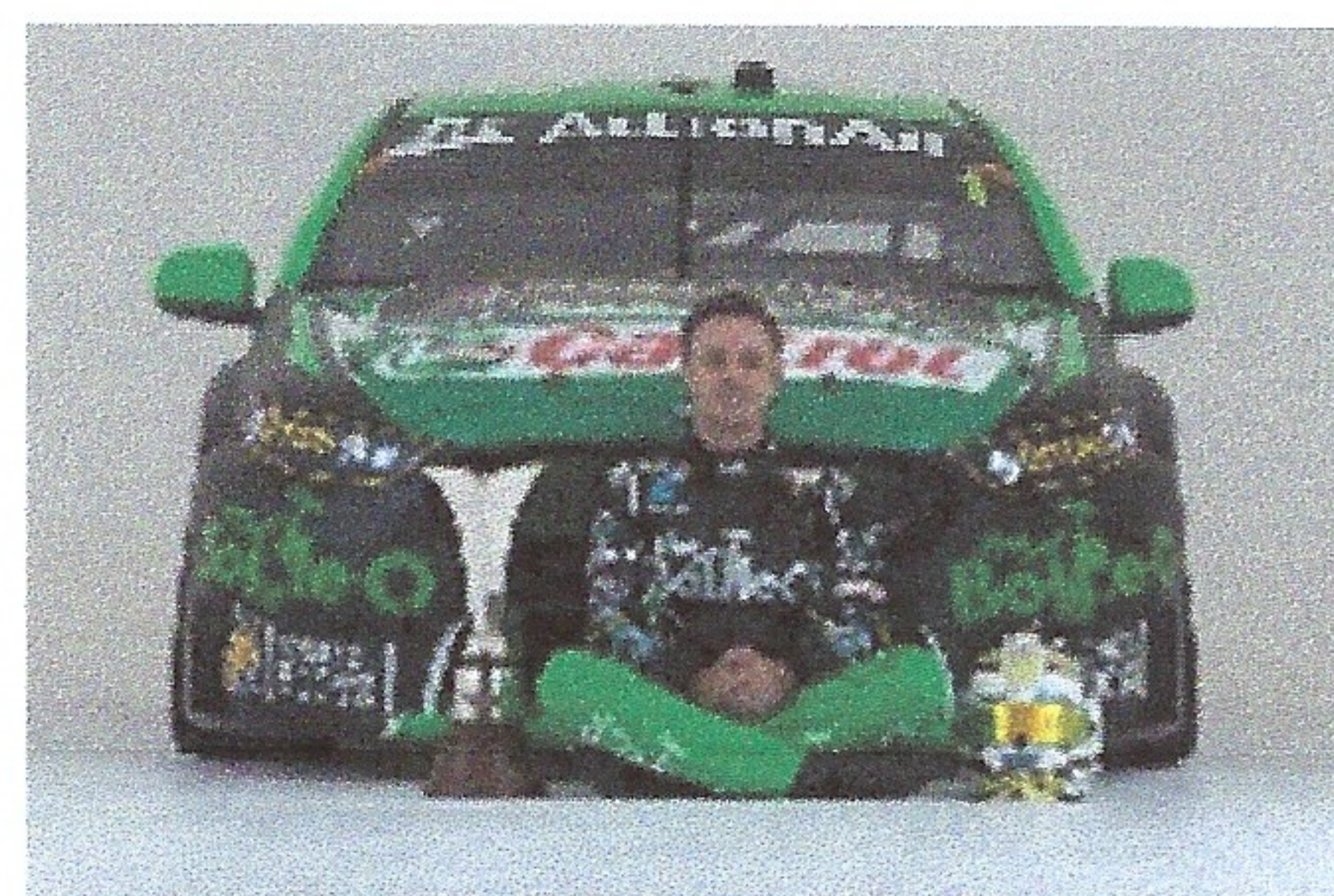
NEVER let your past determine your future.

Congratulations Ben Hourn, we are immensely proud of you and your achievements.





## OUR SUPPORTERS



**Stockland**  
*it's your place*



**Rotary Club of Ku-ring-gai Inc.**

**International**  
Animal Health Products



**Aaron Sainsbury,**  
Personal Mortgage Adviser  
Phone 9818 8643 |  
Mobile 0418 200 418  
Email [asainsbury@smartline.com.au](mailto:asainsbury@smartline.com.au)  
Web [smartline.com.au/asainsbury](http://smartline.com.au/asainsbury)  
Smartline Credit Licence No. 385325



**Robert Kemp**  
**Lindsay and Frances Forrest**  
**Hon. Ed Husic Member for Chifley**

**Kildare Road Medical Centre**  
**Alan Pendleton**  
**Mandy Scali**

**And all those generous people who have donated time and/or services and have asked to remain anonymous.**  
**We thank you one and all**







**EAGLES RAPS INC.  
FINANCIAL REPORTS  
FOR THE YEAR ENDED  
30 JUNE 2017**

**COMMITTEE'S REPORT**

Your committee members submit the financial statements of Eagles RAPS Inc. for the financial year ended 30 June 2017.

**COMMITTEE MEMBERS**

The names of committee members throughout the year and at the date of this report are:

Marten Wynd  
Mark Dent  
Sally Wynd

Robyn Moir  
Cathy Dent

Kylie Henman  
Scott Dent

**PRINCIPAL ACTIVITIES**

The Principal Activities of the association during the financial year was to act as a suicide prevention agency.

**SIGNIFICANT CHANGES**

No significant change in the nature of these activities occurred during the year.

**OPERATING RESULT**


The Loss from ordinary activities amounted to

\$37,814.20

Signed in accordance with a resolution of the Members of the Committee.

  
.....  
M. WYND – PRESIDENT

  
.....  
R MOIR- SECRETARY

  
.....  
M.DENT -FINANCE MANAGER



**EAGLES RAPS INC**

**INCOME AND EXPENDITURE STATEMENT  
FOR THE YEAR ENDED 30 JUNE 2017**

| 2016              |                                 |            |                   | 2017   |
|-------------------|---------------------------------|------------|-------------------|--------|
| \$                |                                 | \$         | \$                | \$     |
|                   | <b>INCOME</b>                   |            |                   |        |
|                   | Discount Received               |            |                   | 126.33 |
| 22,955.00         | Gifts                           |            | 0.00              |        |
|                   | Fund Raising Income             |            |                   |        |
| 184,530.65        | Donations                       | 157,172.26 |                   |        |
| 2,278.00          | Service Donations               | 2,304.00   |                   |        |
| 792.16            | Doonside Festival               | 0.00       |                   |        |
| 2,180.00          | Trivia Night Tickets            | 1,461.82   |                   |        |
| 1,560.00          | Trivia Night Raffle             | 640.00     |                   |        |
| 104.55            | Trivia Night Drink Sales        | 34.55      |                   |        |
| 5,005.45          | Major Fundraiser - Sponsorship  | 0.00       |                   |        |
| 3,654.56          | Major Fundraiser - Tickets      | 3,843.87   |                   |        |
| 10,494.00         | Major Fundraiser - Donations    | 15,659.00  |                   |        |
| 210,599.37        | Drink Sales                     | 19.23      | 181,134.73        |        |
| 30,224.00         | Grants                          |            | 1,000.00          |        |
| 1,098.68          | Interest                        |            | 1,198.90          |        |
| 3,229.09          | Course Facilitation Fees        |            | 0.00              |        |
| 0.00              | Wage Subsidy                    |            | 1,661.40          |        |
| 5,443.52          | Proceeds from Sale of Assets    |            | 100.00            |        |
| 12.01             | Miscellaneous Income            |            | 330.01            |        |
| <b>273,561.67</b> | <b>Total Income</b>             |            | <b>185,551.37</b> |        |
|                   | <b>COST OF GOODS SOLD</b>       |            |                   |        |
| -                 |                                 |            | -                 |        |
| <b>273,561.67</b> | <b>Gross Profit</b>             |            | <b>185,551.37</b> |        |
|                   | <b>EXPENDITURE</b>              |            |                   |        |
|                   | Service Expenses                |            |                   |        |
| 347.73            | Direct Services                 |            | 1,177.06          |        |
|                   | Distance Education Expenses     |            |                   |        |
| 21.14             | Cleaning                        | 182.84     |                   |        |
| 425.80            | Computer Software & Accessories | 575.05     |                   |        |
| 760.20            | Consumables                     | 536.83     |                   |        |
| 4,286.40          | Enrolment Fees                  | 7,699.00   |                   |        |
| 1,207.68          | Internet Usage                  | 86.32      |                   |        |
| 1,280.00          | IT Service & Maintenance        | 500.00     |                   |        |
| 0.00              | Postage                         | 6.41       |                   |        |
| 839.67            | Printing                        | 844.89     |                   |        |

The accompanying notes form part of these financial statements.



**EAGLES RAPS INC**

**INCOME AND EXPENDITURE STATEMENT  
FOR THE YEAR ENDED 30 JUNE 2017**

| \$         |  | \$         | \$         | \$         |
|------------|--|------------|------------|------------|
| 57.28      | Reference Material   | 77.14      |            |            |
| 1,246.47   | Repairs & Maintenance  | 59.21      |            |            |
| 1,188.41   | Special Events   | 779.94     |            |            |
| 2,738.50   | Stationery   | 4,146.82   |            |            |
| 3,116.55   | Telephone  | 3,016.52   |            |            |
| 0.00       | Travel   | 410.12     |            |            |
| 145,903.84 | Wages & Salaries - Education Programme Employees               | 148,951.88 |            |            |
| 13,603.06  | Superannuation - Education Programme Employees                 | 13,960.48  |            |            |
|            | Annual Leave Provision - Education Programme Employees         | 97.96      |            |            |
| 84.41      | Long Service Leave (Provision) - Education Programme Employees | 3,177.77   |            |            |
| 2,247.31   | Leave Loading (Provision) - Education Programme Employees      | 17.15      |            |            |
| 14.77      | Miscellaneous Expenses   | 46.62      |            |            |
| 221.00     |  |            |            |            |
| 179,242.49 |  |            | 185,172.95 |            |
| 37,580.81  | Repairs & Maintenance Youth Centre                             |            | 0.00       |            |
| 217,171.03 | <b>Total Service Expenses</b>                                  |            |            | 186,350.01 |
|            | <b>Fund Raising Expenses</b>                                   |            |            |            |
| 941.09     | Trivia Night Expenses  |            | 206.49     |            |
| 7,658.50   | Major Fundraiser Expenses                                      |            | 6,144.55   |            |
| 871.93     | Doonside Festival  |            | 0.00       |            |
| 9,471.52   | <b>Total Fund Raising Expenses</b>                             |            |            | 6,351.04   |
|            | <b>Administration Expenses</b>                                 |            |            |            |
| 1,800.00   | Audit Fees   |            | 1,800.00   |            |
| 107.27     | Computer Software & Accessories - Admin                        |            | 36.32      |            |
| 2,956.96   | Depreciation – Equipment                                       | 2,726.32   |            |            |
| 130.56     | Depreciation - Furniture & Fixtures                            | 1,453.16   |            |            |
| 648.45     | Depreciation - Motor Vehicle                                   | 4,179.99   | 8,359.47   |            |
|            | <b>Employment Expenses</b>                                     |            |            |            |
| 3,450.00   | Wages & Salaries – Admin                                       | 5,027.04   |            |            |
| 142.50     | Superannuation Expense - Admin                                 | 47.50      | 5,074.54   |            |
| 69.38      | Equip Other Written Off  |            | 63.77      |            |
|            | <b>Insurances</b>  |            |            |            |
| 1,276.37   | Car Insurance  | 2,329.64   |            |            |
| 1,412.62   | Public Liability Insurance                                     | 1,709.92   |            |            |
| 1,059.36   | Professional Indemnity Insurance                               | 1,106.65   |            |            |
| 3,340.96   | Workers' Compensation  | 2,952.35   | 8,098.56   |            |
| 110.00     | Postage  |            | 131.60     |            |
| 0.00       | Printing   |            | 363.63     |            |
| 277.13     | Rent   |            | 278.13     |            |

The accompanying notes form part of these financial statements.



**EAGLES RAPS INC**

**INCOME AND EXPENDITURE STATEMENT  
FOR THE YEAR ENDED 30 JUNE 2017**

| \$         |                                      | \$     | \$       | \$         |
|------------|--------------------------------------|--------|----------|------------|
| 194.86     | Special Events - Admin               |        | 147.07   |            |
| 127.27     | Stationery - Admin                   |        | 410.84   |            |
| 54.00      | Statutory Fees                       |        | 187.00   |            |
| 930.00     | Subscriptions and Memberships        |        | 1,724.93 |            |
| 955.98     | Telephone                            |        | 920.81   |            |
| 5,321.00   | Training                             |        | 0.00     |            |
| 892.10     | Utilities: Electricity               |        | 1,008.88 |            |
|            | Vehicle Expenses                     |        |          |            |
| 1,034.47   | Registration                         | 567.19 |          |            |
| 190.78     | Repairs & Maintenance                | 516.35 | 1,021.35 |            |
| 203.00     | Miscellaneous Expenses               |        | 471.72   |            |
| 26,685.02  | <b>Total Administration Expenses</b> |        |          | 30,098.62  |
|            | <b>Financial Expenses</b>            |        |          |            |
| 2.95       | Bank Charges                         |        | 23.36    |            |
| 505.03     | Bendigo Gift Merchant Fees           |        | 480.35   |            |
| 507.98     | <b>Total Financial Expenses</b>      |        |          | 565.90     |
| 253,835.55 | <b>Total Expenses</b>                |        |          | 223,365.57 |
| 19,726.12  | <b>NET SURPLUS/LOSS</b>              |        |          | -37,814.20 |

The accompanying notes form part of these financial statements.



**EAGLES RAPS INC.**

**INCOME AND EXPENDITURE STATEMENT  
FOR THE YEAR ENDED 30 JUNE 2017**

| <b>2016</b> |   | <b>Note</b> | <b>2017</b> |
|-------------|---|-------------|-------------|
| <b>\$</b>   |   |             | <b>\$</b>   |
| 133,726.12  | ACCUMULATED SURPLUS AT THE<br>BEGINNING OF THE FINANCIAL YEAR |             | 153,452.24  |
| 19,726.12   | PROFIT/LOSS FROM ORDINARY ACTIVITIES                          |             | -37,814.20  |
| 153,452.24  | ACCUMULATED SURPLUS AT THE END OF THE<br>FINANCIAL YEAR       |             | 115,638.04  |

The accompanying notes form part of these financial statements.



# EAGLES RAPS INC

## BALANCE SHEET AS AT 30 JUNE 2017

| 2016              |   | Note | 2017              |
|-------------------|---|------|-------------------|
| \$                |   |      | \$                |
|                   | CURRENT ASSETS                          |      |                   |
| 20,508.07         | Cash at Bank - CBA General Account      |      | 894.90            |
| 55.07             | Cash at Bank - St George                |      | 167.56            |
| 26,422.97         | Cash at Bank - Bendigo Project Account  |      | 73.25             |
| 33,763.04         | Cash at Bank - Bendigo Salaries Account |      | 11,817.50         |
| 7,993.59          | Cash at Bank - CBA Gift                 |      | 1,493.74          |
| 28,651.37         | Cash at Bank - Bendigo Gift             |      | 9,300.26          |
| 5,526.14          | Prepaid Expenses                        |      | 4,987.37          |
| 40,000.00         | Debtors                                 |      | 100,790.00        |
| <u>162,920.25</u> | TOTAL CURRENT ASSETS                    |      | <u>129,524.58</u> |
|                   | NON-CURRENT ASSETS                      |      |                   |
| <u>27,658.28</u>  | Fixed Assets                            |      | <u>29,488.40</u>  |
| <u>27,658.28</u>  | TOTAL NON-CURRENT ASSETS                |      | <u>29,488.40</u>  |
| <u>190,578.53</u> | TOTAL ASSETS                            |      | <u>159,012.98</u> |
|                   | CURRENT LIABILITIES                     |      |                   |
| <u>37,126.29</u>  | Creditors and Accruals                  |      | <u>43,374.94</u>  |
| <u>37,126.29</u>  | TOTAL CURRENT LIABILITIES               |      | <u>43,374.94</u>  |
|                   | NON-CURRENT LIABILITIES                 |      |                   |
| <u>-</u>          | Long Term Liabilities                   |      | <u>-</u>          |
| <u>-</u>          | TOTAL NON-CURRENT LIABILITIES           |      | <u>-</u>          |
| <u>37,126.29</u>  | TOTAL LIABILITIES                       |      | <u>43,374.94</u>  |
| <u>153,452.24</u> | NET ASSETS                              |      | <u>115,638.04</u> |
|                   | MEMBERS' FUNDS                          |      |                   |
| 133,726.12        | Accumulated Surplus/Retained Profits    |      | 153,452.24        |
| 19,726.12         | Surplus                                 |      | -37,814.20        |
| <u>153,452.24</u> | TOTAL MEMBERS' FUNDS                    |      | <u>115,638.04</u> |

The accompanying notes form part of these financial statements



**EAGLES RAPS INC.**

| <b>Statement of Financial Performance for the year ended 30 June 2017</b> |             |                   |
|---|-------------|-------------------|
|   | <b>Note</b> | <b>2017</b>       |
|   |             | <b>\$</b>         |
| <b>Revenues</b>   | <b>1</b>    | <b>185,551.37</b> |
| <b>Cost of Goods Sold</b>   |             | <b>0.00</b>       |
| <b>Gross Profit</b>   |             | <b>185,551.37</b> |
| <b>Expenses classified by functional activity</b>                         |             |                   |
| Youth Centre  |             | 0.00              |
| Distance Education Centre   |             | 185,172.95        |
| Client Direct Support   |             | 1,177.06          |
| Fund Raising  |             | 6,351.04          |
| Administration  |             | 30,602.33         |
| Financial   |             | 62.19             |
|   |             | <b>223,365.57</b> |
| <b>Surplus from ordinary activities</b>                                   |             | <b>-37,814.20</b> |

The accompanying notes form part of these financial statements



EAGLES RAPS INC.

DETAILED STATEMENT OF FINANCIAL PERFORMANCE FOR THE YEAR ENDED 30 JUNE 2017

|  | 2016              | 2017              |             |             |                |                   |                 |                 |                 |                 |             |             |             |
|--|-------------------|-------------------|-------------|-------------|----------------|-------------------|-----------------|-----------------|-----------------|-----------------|-------------|-------------|-------------|
|  | \$                | \$                | \$          | Distance    | Client Support | Fund Raising      | Grants          | Admin           | Donations In    | Interest        |             |             |             |
|  |                   |                   |             | Education   |                |                   |                 |                 | Kind            |                 |             |             |             |
| <b>REVENUE</b>                           |                   |                   |             |             |                |                   |                 |                 |                 |                 |             |             |             |
| <b>General Income</b>                    |                   |                   |             |             |                |                   |                 |                 |                 |                 |             |             |             |
| Course Facilitation Fees                 | 3,229.09          | 0.00              |             |             |                |                   |                 |                 |                 |                 |             |             |             |
| Gifts                                    | 22,955.00         | 0.00              |             |             |                |                   |                 |                 |                 |                 |             |             |             |
| Grants                                   | 30,224.00         | 1,000.00          |             |             |                |                   | 1,000.00        | 100.00          |                 |                 |             |             |             |
| Proceeds from Sale of Assets             | 5,443.52          | 100.00            |             |             |                |                   |                 | 330.01          |                 |                 |             |             |             |
| Miscellaneous Income                     | 12.01             | 330.01            |             |             |                |                   |                 |                 |                 |                 |             |             |             |
| <b>Total General Income</b>              | <b>61,863.62</b>  | <b>1,430.01</b>   | <b>0.00</b> | <b>0.00</b> | <b>0.00</b>    | <b>0.00</b>       | <b>1,000.00</b> | <b>430.01</b>   | <b>0.00</b>     | <b>0.00</b>     | <b>0.00</b> | <b>0.00</b> | <b>0.00</b> |
| <b>Fund Raising Income</b>               |                   |                   |             |             |                |                   |                 |                 |                 |                 |             |             |             |
| Donations                                | 184,530.65        | 157,172.26        |             |             |                | 157,172.26        |                 |                 |                 |                 |             |             |             |
| Donations In Kind                        | 2,278.00          | 2,304.00          |             |             |                |                   |                 |                 |                 |                 | 2,304.00    |             |             |
| Doonside Festival                        | 792.16            | 0.00              |             |             |                |                   |                 |                 |                 |                 |             |             |             |
| Trivia Night – Ticket Sales              | 2,180.00          | 1,461.82          |             |             |                | 1,461.82          |                 |                 |                 |                 |             |             |             |
| Trivia Night – Raffles                   | 1,560.00          | 640.00            |             |             |                | 640.00            |                 |                 |                 |                 |             |             |             |
| Trivia Night – Drink Sales               | 104.55            | 34.55             |             |             |                | 34.55             |                 |                 |                 |                 |             |             |             |
| Major Fundraising Evening - Sponsorship  | 5,005.45          | 0.00              |             |             |                |                   |                 |                 |                 |                 |             |             |             |
| Major Fundraising Evening – Ticket Sales | 3,654.56          | 3,843.87          |             |             |                | 3,843.87          |                 |                 |                 |                 |             |             |             |
| Major Fundraising Evening – Takings      | 10,494.00         | 15,659.00         |             |             |                | 15,659.00         |                 |                 |                 |                 |             |             |             |
| Drink Sales                              | 0.00              | 19.23             |             |             |                | 19.23             |                 |                 |                 |                 |             |             |             |
| Wage subsidy                             | 0.00              | 1,661.40          |             |             |                |                   |                 | 1,661.40        |                 |                 |             |             |             |
| <b>Total Fundraising Income</b>          | <b>210,599.37</b> | <b>182,796.13</b> | <b>0.00</b> | <b>0.00</b> | <b>0.00</b>    | <b>178,830.73</b> | <b>0.00</b>     | <b>1,661.40</b> | <b>2,304.00</b> | <b>0.00</b>     | <b>0.00</b> | <b>0.00</b> | <b>0.00</b> |
| <b>Financial Income</b>                  |                   |                   |             |             |                |                   |                 |                 |                 |                 |             |             |             |
| Interest Income                          | 1,098.68          | 1,198.90          |             |             |                |                   |                 |                 |                 | 1,198.90        |             |             |             |
| Discount Received                        | 0.00              | 126.33            |             |             | 126.33         |                   |                 |                 |                 |                 |             |             |             |
| <b>Total Financial Income</b>            | <b>1,098.68</b>   | <b>1,325.23</b>   | <b>0.00</b> | <b>0.00</b> | <b>126.33</b>  | <b>0.00</b>       | <b>0.00</b>     | <b>0.00</b>     | <b>0.00</b>     | <b>0.00</b>     | <b>0.00</b> | <b>0.00</b> | <b>0.00</b> |
| <b>TOTAL INCOME</b>                      | <b>273,561.67</b> | <b>185,551.37</b> | <b>0.00</b> | <b>0.00</b> | <b>126.33</b>  | <b>178,830.73</b> | <b>1,000.00</b> | <b>2,091.41</b> | <b>2,304.00</b> | <b>1,198.90</b> | <b>0.00</b> | <b>0.00</b> | <b>0.00</b> |
| <b>COST OF GOODS SOLD</b>                |                   |                   |             |             |                |                   |                 |                 |                 |                 |             |             |             |
| Opening Stock                            | 0.00              | 0.00              |             |             |                |                   |                 |                 |                 |                 |             |             |             |
| Plus Purchases                           | 0.00              | 0.00              |             |             |                |                   |                 |                 |                 |                 |             |             |             |
|  | 0.00              | 0.00              |             | 0.00        | 0.00           | 0.00              | 0.00            | 0.00            | 0.00            | 0.00            | 0.00        | 0.00        | 0.00        |



|                                 | 2016<br>\$ | 2017<br>\$ | \$<br>Distance<br>Education | \$<br>Client Support | \$<br>Fund Raising | \$<br>Grants | \$<br>Admin | \$<br>Donations In<br>Kind | \$<br>Interest |
|---------------------------------|------------|------------|-----------------------------|----------------------|--------------------|--------------|-------------|----------------------------|----------------|
| Less Stock Written Off          | 0.00       | 0.00       |                             |                      |                    |              |             |                            |                |
| Less Closing Stock              | 0.00       | 0.00       |                             |                      |                    |              |             |                            |                |
| <b>TOTAL COST OF GOODS SOLD</b> | 0.00       | 0.00       | 0.00                        | 0.00                 | 0.00               | 0.00         | 0.00        |                            | 0.00           |
| <b>GROSS PROFIT</b>             | 273,561.67 | 185,551.37 | 0.00                        | 126.33               | 178,830.73         | 1,000.00     | 2,091.41    | 2,304.00                   | 1,198.00       |

## EXPENSES

### Service Expenses

#### Direct Expenses

#### Education Programme Expenses

|                                     |            |            |            |  |  |  |  |  |  |
|-------------------------------------|------------|------------|------------|--|--|--|--|--|--|
| Cleaning                            | 21.14      | 182.84     | 182.84     |  |  |  |  |  |  |
| Computer Software & Accessories     | 425.80     | 575.05     | 575.05     |  |  |  |  |  |  |
| Consumables                         | 760.20     | 536.83     | 536.83     |  |  |  |  |  |  |
| Enrolment Fees                      | 4,286.40   | 7,699.00   | 7,699.00   |  |  |  |  |  |  |
| Internet Usage                      | 1,207.68   | 86.32      | 86.32      |  |  |  |  |  |  |
| IT Service & Maintenance            | 1,280.00   | 500.00     | 500.00     |  |  |  |  |  |  |
| Postage                             | 0.00       | 6.41       | 6.41       |  |  |  |  |  |  |
| Printing                            | 839.67     | 844.89     | 844.89     |  |  |  |  |  |  |
| Reference Material                  | 57.28      | 77.14      | 77.14      |  |  |  |  |  |  |
| Repairs & Maintenance               | 1,246.47   | 59.21      | 59.21      |  |  |  |  |  |  |
| Special Events                      | 1,188.41   | 779.94     | 779.94     |  |  |  |  |  |  |
| Stationery                          | 2,738.50   | 4,146.82   | 4,146.82   |  |  |  |  |  |  |
| Telephone                           | 3,116.55   | 3,016.52   | 3,016.52   |  |  |  |  |  |  |
| Travel                              | 0.00       | 410.12     | 410.12     |  |  |  |  |  |  |
| Wages & Salaries – Education Prog.  | 145,903.84 | 148,951.88 | 148,951.88 |  |  |  |  |  |  |
| Superannuation – Education Prog.    | 13,603.06  | 13,960.48  | 13,960.48  |  |  |  |  |  |  |
| Annual Leave (Provision) Ed. Prog   | 84.41      | 97.96      | 97.96      |  |  |  |  |  |  |
| Long Service Leave (Prov.) Ed. Prog | 2,247.31   | 3,177.77   | 3,177.77   |  |  |  |  |  |  |
| Leave Loading (Provision) Ed. Prog. | 14.77      | 17.15      | 17.15      |  |  |  |  |  |  |
| Miscellaneous Expenses              | 221.00     | 46.62      | 46.62      |  |  |  |  |  |  |

1,177.06



|  | 2016<br>\$        | 2017<br>\$        | \$<br>Distance<br>Education | \$<br>Client Support | \$<br>Fund Raising | \$<br>Grants | \$<br>Admin | \$<br>Donations In<br>Kind | \$<br>Interest |
|--|-------------------|-------------------|-----------------------------|----------------------|--------------------|--------------|-------------|----------------------------|----------------|
| Repairs & Maintenance – Youth<br>Centre    | 37,580.81         | 0.00              |                             |                      |                    |              |             |                            |                |
| <b>Total Service Expenses</b>              | <b>173,923.96</b> | <b>217,171.03</b> | <b>37,580.81</b>            | <b>179,242.49</b>    | <b>0.00</b>        | <b>0.00</b>  | <b>0.00</b> |                            | <b>0.00</b>    |
| <b>Fund Raising Expenses</b>               |                   |                   |                             |                      |                    |              |             |                            |                |
| Doonside Festival                          | 871.93            | 0.00              |                             |                      |                    |              |             |                            |                |
| Major Fundraising Evening – Lily's         | 7,658.50          | 6,144.55          |                             |                      | 206.49             |              |             |                            |                |
| Trivia Night                               | 941.09            | 206.49            |                             |                      | 206.49             |              |             |                            |                |
| <b>Total Fundraising Expenses</b>          | <b>9,471.52</b>   | <b>6,351.04</b>   | <b>0.00</b>                 | <b>0.00</b>          | <b>9,471.52</b>    | <b>0.00</b>  | <b>0.00</b> |                            | <b>0.00</b>    |
| <b>Administration Expenses</b>             |                   |                   |                             |                      |                    |              |             |                            |                |
| Audit Fees                                 | 1,800.00          | 1,800.00          |                             |                      |                    |              | 1,800.00    |                            |                |
| Computer Software & Accessories –<br>Admin | 107.27            | 36.32             |                             |                      |                    |              | 36.32       |                            |                |
| Depreciation – Equipment                   | 2,956.96          | 2,726.32          |                             |                      |                    |              | 2,726.32    |                            |                |
| Depreciation – Furniture & Fixtures        | 130.56            | 1,453.16          |                             |                      |                    |              | 1,453.16    |                            |                |
| Depreciation – Motor Vehicle               | 648.45            | 4,179.99          |                             |                      |                    |              | 4,179.99    |                            |                |
| Wages & Salaries – Administration          | 3,450.00          | 5,027.04          |                             |                      |                    |              | 5,027.04    |                            |                |
| Superannuation Expense –<br>Administration | 142.50            | 47.50             |                             |                      |                    |              | 47.50       |                            |                |
| Equipment Written Off                      | 69.38             | 63.77             |                             |                      |                    |              | 63.77       |                            |                |
| Insurance                                  |                   |                   |                             |                      |                    |              |             |                            |                |
| Vehicle                                    | 1,276.37          | 2,329.64          |                             |                      |                    |              | 2,329.64    |                            |                |
| Public Liability                           | 1,412.62          | 1,709.92          |                             |                      |                    |              | 1,709.92    |                            |                |
| Professional Indemnity                     | 1,059.36          | 1,106.65          |                             |                      |                    |              | 1,106.65    |                            |                |
| Worker's Compensation                      | 3,340.96          | 2,952.35          |                             |                      |                    |              | 2,952.35    |                            |                |
| Postage                                    | 110.00            | 131.60            |                             |                      |                    |              | 131.60      |                            |                |
| Printing                                   | 0.00              | 363.63            |                             |                      |                    |              | 363.63      |                            |                |
| Rent                                       | 277.13            | 278.13            |                             |                      |                    |              | 278.13      |                            |                |
| Special Events – Administration            | 194.86            | 147.07            |                             |                      |                    |              | 147.07      |                            |                |
| Stationery                                 | 127.27            | 410.84            |                             |                      |                    |              | 410.84      |                            |                |
| Statutory Fees                             | 54.00             | 187.00            |                             |                      |                    |              | 187.00      |                            |                |
| Subscriptions & Publications               | 930.00            | 1,724.93          |                             |                      |                    |              | 1,724.93    |                            |                |
| Telephone – Administration                 | 955.98            | 920.81            |                             |                      |                    |              | 920.81      |                            |                |
| Training                                   | 5,321.00          | 0.00              |                             |                      |                    |              | 0.00        |                            |                |
| Utilities – Electricity                    | 892.10            | 1,008.88          |                             |                      |                    |              | 1,008.88    |                            |                |
| Motor Vehicle:                             |                   |                   |                             |                      |                    |              |             |                            |                |
| Registration                               | 1,034.47          | 505.00            |                             |                      |                    |              | 505.00      |                            |                |
| Repairs & Maintenance                      | 190.78            | 516.35            |                             |                      |                    |              | 516.35      |                            |                |



|                                      | 2016              | 2017              |                    |                  |                   |                 |                   |                  |              |                 |  |  |  |
|--------------------------------------|-------------------|-------------------|--------------------|------------------|-------------------|-----------------|-------------------|------------------|--------------|-----------------|--|--|--|
|                                      | \$                | \$                | \$                 | Distance         | Client Support    | Fund Raising    | Grants            | Admin            | Donations In | Interest        |  |  |  |
|                                      |                   |                   |                    | Education        |                   |                 |                   |                  | Kind         |                 |  |  |  |
| Miscellaneous Expenses               | 203.00            | 471.72            |                    |                  |                   |                 |                   | 471.72           |              |                 |  |  |  |
| <b>Total Administration Expenses</b> | <b>26,685.02</b>  | <b>30,098.62</b>  | <b>0.00</b>        | <b>0.00</b>      | <b>0.00</b>       | <b>0.00</b>     | <b>0.00</b>       | <b>30,098.62</b> |              | <b>0.00</b>     |  |  |  |
| Financial Expenses                   |                   |                   |                    |                  |                   |                 |                   |                  |              |                 |  |  |  |
| Bank Charges                         | 2.95              | 23.36             |                    |                  |                   |                 |                   | 23.36            |              |                 |  |  |  |
| Bendigo Bank Merchant Fees           | 505.03            | 480.35            |                    |                  |                   |                 |                   | 480.35           |              |                 |  |  |  |
| Interest                             | 0.00              | 62.19             |                    |                  |                   |                 |                   |                  |              | 62.19           |  |  |  |
| <b>Total Financial Expenses</b>      | <b>507.98</b>     | <b>565.90</b>     | <b>0.00</b>        | <b>0.00</b>      | <b>0.00</b>       | <b>0.00</b>     | <b>0.00</b>       | <b>565.90</b>    | <b>0.00</b>  | <b>0.00</b>     |  |  |  |
| <b>TOTAL EXPENSES</b>                | <b>253,835.55</b> | <b>223,365.57</b> | <b>185,172.95</b>  | <b>1,177.06</b>  | <b>6,351.04</b>   | <b>0.00</b>     | <b>30,602.33</b>  |                  |              | <b>62.19</b>    |  |  |  |
| <b>NET PROFIT</b>                    | <b>19,726.12</b>  | <b>-37,814.20</b> | <b>-185,172.95</b> | <b>-1,050.73</b> | <b>172,479.69</b> | <b>1,000.00</b> | <b>-28,510.92</b> | <b>2,304.00</b>  |              | <b>1,136.71</b> |  |  |  |

The accompanying notes form part of these financial statements



**EAGLES RAPS INC.**

| <b>Statement of Cash Flows for the year ended 30 June 2017</b>                         |             |   |
|--|-------------|---|
|  | <b>Note</b> | <b>2017<br/>\$ Inflow<br/>(Outflow)</b> |
| <b>Cash flows from operating activities</b>  |             |   |
| Cash receipts in the course of operations  |             | \$121,937.60                            |
| Cash payments in the course of operations  |             | -\$208,434.04                           |
| Interest Received  |             | \$1,198.90                              |
| Interest Paid  |             | \$0.00                                  |
| <b>Net cash provided by operating activities</b>                                       |             | <b>-\$85,297.54</b>                     |
| <b>Cash flows from investing activities</b>  |             |   |
| Proceeds from sale of equipment  |             | \$100.00                                |
| Purchase of equipment  |             | -\$8,449.36                             |
| <b>Net cash used by investing activities</b>   |             | <b>-\$8,349.36</b>                      |
| <b>Cash flows from financial activities</b>  |             |   |
| Cash receipts from loans   |             | \$0.00                                  |
| Cash payments to loans   |             | \$0.00                                  |
| <b>Net cash provided by financial activities</b>                                       |             | <b>\$0.00</b>                           |
| <b>Net increase in cash and cash equivalents</b>                                       |             | <b>-\$93,646.90</b>                     |
| Cash and cash equivalents at the beginning of the financial year                       |             | \$117,394.11                            |
| Cash and cash equivalents at the end of the financial year                             |             | <b>\$23,747.21</b>                      |
| <b>Notes to the Statement of Cash Flows</b>  |             |   |
| <b>A Reconciliation of cash flows from operating activities with Operating surplus</b> |             |   |
| Operating Profit   |             | -\$37,814.20                            |
| Non-cash flows in operating surplus  |             |   |
| Depreciation Motor Vehicle   |             | \$4,179.99                              |
| Depreciation Furniture & Fixtures  |             | \$1,453.16                              |
| Depreciation Equipment   |             | \$2,726.32                              |
| Equipment Written off  |             | \$63.77                                 |
| Donations in Kind  |             | -\$1,804.00                             |
| Gain on Sale of Assets   |             | -\$100.00                               |
| Changes in assets and liabilities  |             |   |
| Net increase in provision for Employee Entitlements                                    |             | \$3,623.06                              |
| Increase in Debtors  |             | -\$60,790.00                            |
| Increase in Creditors  |             | \$2,110.88                              |
| Decrease in Prepaid Expenses   |             | \$538.77                                |
| Increase in Accrued Expenses   |             | \$514.71                                |
| <b>Net cash provided by operating activities</b>                                       |             | <b>-\$85,297.54</b>                     |
| <b>B. Reconciliation of Cash</b>   |             |   |
| Cash at the end of the year is shown in the balance sheet                              |             |   |
| Total Cash On Hand   |             | \$23,747.21                             |
| <b>Cash and Cash equivalents at end of year</b>  |             | <b>\$23,747.21</b>                      |

The accompanying notes form part of these financial statements



EAGLES RAPS INC.

NOTES TO AND FORMING PART OF THE FINANCIAL STATEMENTS  
FOR THE YEAR ENDING 30 JUNE 2017

Note 1: Statement of Significant Accounting Policies

This financial report is a special purpose financial report prepared in order to satisfy the financial reporting requirements of the *Associations Incorporation Act NSW*. The committee has determined that the association is not a reporting entity.

The financial report has been prepared in accordance with the requirements of the *Associations Incorporation Act NSW*, the *NSW Charitable Fundraising Act and Regulations* and the following Australian Accounting Standards:

|        |                                       |
|--------|---------------------------------------|
| AAS 3  | Accounting for Income Tax             |
| AAS 5  | Materiality                           |
| AAS 8  | Events Occurring After Reporting Date |
| AAS 17 | Accounting for Leases                 |

No other Australian Accounting Standards, Urgent Issued Group Consensus View or other authoritative pronouncements of the Australian Accounting Standards Board have been applied.

The financial report has been prepared on an accruals basis and is based on historic costs and does not take into account changing money values, or except where specifically stated, current valuations of non-current assets.

The following material accounting policy, which is consistent with the previous period unless otherwise stated, has been adopted in the preparation of this financial report.

*Fixed Assets*

All Assets including Motor Vehicles, Furniture and Fixtures and Equipment are carried at cost, less, where applicable, any accumulated depreciation. The trailer was sold with a gain of \$100. There has been minimal reduction in Furniture and Fixtures and Equipment which is primarily due to depreciation.

The depreciable amount of all fixed assets are depreciated over the useful lives of the assets to the association commencing from the time the asset is held ready for use.



### ***Fixed Assets***

|                               | <u>2017</u>      | <u>2016</u>      |
|-------------------------------|------------------|------------------|
|                               | \$               | \$               |
| Motor Vehicles                | 20,900.00        | 21,418.18        |
| Less accumulated depreciation | <u>4,225.67</u>  | <u>563.86</u>    |
|                               | 16,674.33        | 20,854.35        |
| <br>Furniture & Fixtures      | <br>10,314.37    | <br>4,673.08     |
| Less accumulated depreciation | <u>4,611.90</u>  | <u>4,429.54</u>  |
|                               | 5,702.47         | 243.54           |
| <br>Equipment – Other         | <br>54,442.07    | <br>51,226.25    |
| Less accumulated depreciation | <u>47,330.47</u> | <u>44,665.83</u> |
|                               | 7,111.60         | 6,560.42         |

### **Revenue**

Revenue from the sale of goods is recognised upon the delivery of the goods to clients. Interest revenue is recognised as received. Revenue from the rendering of a service is recognised upon the delivery of the service to the client. Government grants are recognised in the period to which the funding agreement relates. All revenue is stated net of the amount of GST.

### **Disposal of Surplus**

**Annual surplus:** Rules No 37 and 38 of the Association's Constitution prohibits the distribution of any surplus to Members. All income must be applied solely towards the promotion of the objects of the Association.

**Surplus on liquidation:** As required by the *Charitable Fundraising Act 1991*, the *Income Tax Assessment Act 1997* and the *Tax Ruling TR2000/12* and Rule No. 39 of the Constitution, any assets remaining upon the winding up of the Association must be applied to the objects or purposes for which they were raised.

### **Restricted/Unrestricted Funds**

Restricted Funds are funds received or reserves held that must be spent on the purpose for which they were received or are held. They comprise:

- Government funding and related interest that must be spent in accordance with the terms of a funding agreement.
- Donations and bequests where the donor indicates a preference for the use to which the funds are to be used.
- Donations received in response to specific purpose appeals.
- Provisions for statutory entitlements due to employees.

The Association received \$157,172.26 in cash donations and \$2,304.00 in donations in kind. It also received \$1,000.00 in a Stockland Community Grant.

All other funds are unrestricted in that the management committee has discretion to spend them on purposes for which the charity is established.



## Taxes

**Income Tax:** Under the New Tax System, the Association was endorsed on 1 July 2000 by the ATO as an income tax exempt charity.

**Capital Gains Tax:** the Association, as a public benevolent institution, is exempt from capital gains tax under Section 50-5 *Income Tax Assessment Act 1997*.

**Stamp Duties and charges:** The Association, as a public benevolent institution and the holder of an Authority to Fundraise under the *Charitable Fundraising Act 1991* has a general exemption from paying stamp duty and charges under Section 275 of the *NSW Duties Act 1997*.

**Goods and services tax:** The Association, as a public benevolent institution, is registered for the goods and services tax (GST) applicable from 1 July 2000. The tax is paid on revenues from competitive commercial activities and sponsorship. Most input taxes charged are credited except for expenses related to non-creditable transactions. Note 4, revenues, costs and assets are recognised net of the amount of GST except:

- i) where the amount of GST incurred is not recoverable from the ATO, it is recognised as part of the cost of acquisition of an asset or as part of an item of cost; or
- ii) for receivables and payables which are recognised inclusive of GST.

The net amount of GST recoverable from, or payable to, the ATO is included as part of receivables or payables.

## *Fundraising Activities*

**Charitable Fundraising Act 1991:** this Act and supporting Charitable Fundraising Regulation prescribe the manner in which fundraising appeals are conducted, controlled and reported in NSW. The amounts shown in Note 18 are in accordance with Authority Condition 7, which is issued to the Association under section 19 of the Act.

**Australian Charities and Not-for-Profit Commission (ACNC):** The Association is registered with the ACNC as a Deductible Gift Recipient with DGR Item 1 status.

**Donations:** are returned as income as and only when received at the Association's administration offices or deposited to the Association's bank account.

**Costs of fundraising:** costs used in Note 18 include all direct fundraising costs in accordance with the Act. The inclusion of indirect costs is discretionary but the management committee has chosen not to include these as fundraising costs. Indirect costs excluded, include overheads such as cost apportionment of rent, light and power, and insurance. Exclusion of the indirect costs decreases the cost of fundraising and increases the margins from fundraising shown in Note 18.

**Education cost allocation:** all fundraising activities are structured for dual purposes; to raise funds for expenditure on various services and to educate target groups, the Association and the services provided by the Association, which are themselves services.

**Member's Cost allocations:** no costs were attributed to Members.

**Donor acquisition:** no costs associated with donor acquisition are charged against fund-raising income.



**General fundraising:** Costs charged to general fundraising relate to the planning and development of fundraising activities. Revenue from unsolicited donations is credited to the Gift account and only solicited donations are credited to fund-raising revenue.

## **DONATED SERVICES**

Various services are donated to the Association. No assessment of the value of those services is included in the accounts.



**EAGLES RAPS INC.**  
**NOTES TO AND FORMING PART OF THE FINANCIAL STATEMENTS**  
**FOR THE YEAR ENDED 30 JUNE 2017**

**Note 2: Revenue**

|                                 | Unrestricted<br>Funds | Restricted<br>Funds | 2017       | 2016       |
|---------------------------------|-----------------------|---------------------|------------|------------|
|                                 | \$                    | \$                  | \$         | \$         |
| <b>Operating Activities</b>     |                       |                     |            |            |
| Major Gifts                     |                       |                     | 0.00       | 22,955.00  |
| Grants                          |                       | 1,000.00            | 1,000.00   | 30,224.00  |
| Fund Raising Events             | 21,658.47             |                     | 21,658.47  | 23,790.72  |
| Donations                       | 157,172.26            |                     | 157,172.26 | 184,530.65 |
| Donations in kind               | 2,304.00              |                     | 2,304.00   | 2,278.00   |
| Minor Interest Income           | 1,198.90              |                     | 1,198.90   | 1,098.68   |
| Course Facilitation Fees        | 0.00                  |                     | 0.00       | 3,229.09   |
| Discount Received               | 126.33                |                     | 126.33     | 0.00       |
| Wage Subsidy                    | 1,661.40              |                     | 1,661.40   | 0.00       |
| Miscellaneous Income            | 330.01                |                     | 330.01     | 12.01      |
|                                 | 184,451.37            | 1,000.00            | 185,451.37 | 268,118.15 |
| <b>Non-Operating Activities</b> |                       |                     |            |            |
| Gain on Sale of Assets          | 100.00                |                     | 100.00     | 5,443.52   |
|                                 | 184,551.37            | 1,000.00            | 185,551.37 | 273,561.67 |

**Note 3: Surplus from Ordinary activities**

Operating surplus from ordinary activities has been determined after

|                                    | Unrestricted<br>Funds | Restricted<br>Funds | 2017     |
|------------------------------------|-----------------------|---------------------|----------|
|                                    | \$                    | \$                  | \$       |
| <b>Costs</b>                       |                       |                     |          |
| Depreciation of non-current assets |                       |                     |          |
| Motor vehicles                     | 4,179.99              |                     | 4,179.99 |
| Equipment                          | 2,726.32              |                     | 2,726.32 |
| Furniture & Fixtures               | 1,453.16              |                     | 1,453.16 |
| Total Depreciation                 | 8,359.47              |                     | 8,359.47 |
| Equipment Written Off              | 63.77                 |                     | 63.77    |
| Payment to auditors                | 1,800.00              |                     | 1,800.00 |
| Rental expense                     | 278.13                |                     | 278.13   |
| Revenue and net gains              |                       |                     |          |
| Interest                           | 1,198.90              |                     | 1,198.90 |



**EAGLES RAPS INC.**  
**NOTES TO AND FORMING PART OF THE FINANCIAL STATEMENTS**  
**FOR THE YEAR ENDED 30 JUNE 2017**

**Note 4: Cash Assets**

|  | Unrestricted<br>Funds<br>\$ | Restricted<br>Funds<br>\$ | 2017<br>\$       |
|--|-----------------------------|---------------------------|------------------|
| Cash at bank                                 |                             |                           |                  |
| CBA – General account                        | 894.90                      |                           | 894.90           |
| St George Bank                               | 167.56                      |                           | 167.56           |
| Bendigo Bank – Project account               | 73.25                       |                           | 73.25            |
| Bendigo Bank – Payroll Cheque a/c – Salaries | 11,817.50                   |                           | 11,817.50        |
| CBA – Gift account                           | 1,493.74                    |                           | 1,493.74         |
| Bendigo – Gift account                       | 8,300.26                    | 1,000.00                  | 9,300.26         |
|  |                             | <b>1,000.00</b>           | <b>23,747.21</b> |

**Note 5: Receivables**

|                | Unrestricted<br>Funds<br>\$ | Restricted<br>Funds<br>\$ | 2017<br>\$        |
|----------------|-----------------------------|---------------------------|-------------------|
| Sundry Debtors | -                           | 100,790.00                | 100,790.00        |
|                | -                           | <b>100,790.00</b>         | <b>100,790.00</b> |

**Note 6: Other Financial Assets**

|     | Unrestricted<br>Funds<br>\$ | Restricted<br>Funds<br>\$ | 2017<br>\$ |
|-----|-----------------------------|---------------------------|------------|
| Nil |                             |                           |            |

**Note 7: Other Assets (Prepayments)**

|                                  | Unrestricted<br>Funds<br>\$ | Restricted<br>Funds<br>\$ | 2017<br>\$      |
|----------------------------------|-----------------------------|---------------------------|-----------------|
| Prepaid Expenses                 |                             |                           |                 |
| Car Insurance                    | 778.78                      |                           | 778.78          |
| Public Liability Insurance       | 1,351.23                    |                           | 1,351.23        |
| Worker's Compensation            | 1,852.83                    |                           | 1,852.83        |
| Professional Indemnity Insurance | 777.98                      |                           | 777.98          |
| Rent                             | 226.55                      |                           | 226.55          |
| Vehicle Registration             | 0.00                        |                           | 0.00            |
|                                  | <b>4,987.37</b>             |                           | <b>4,987.37</b> |



**EAGLES RAPS INC.**  
**NOTES TO AND FORMING PART OF THE FINANCIAL STATEMENTS**  
**FOR THE YEAR ENDED 30 JUNE 2017**

***Note 8: Property, Equipment and Motor Vehicles***

|   | Unrestricted<br>Funds<br>\$ | Restricted<br>Funds<br>\$ | 2017<br>\$       |
|---|-----------------------------|---------------------------|------------------|
| Non-current   |                             |                           |                  |
| Motor Vehicles  |                             |                           |                  |
| Suzuki Grand Vitara                                   | 20,900.00                   |                           | 20,900.00        |
| Less: Accumulated Depreciation                        | -4,225.67                   |                           | -4,225.67        |
| Total Motor Vehicles                                  | 16,674.33                   |                           | 16,674.33        |
| Furniture & Fixtures                                  | 10,314.37                   |                           | 10,314.37        |
| Less: Accumulated Depreciation                        | -4,611.90                   |                           | -4,611.90        |
| Total Furniture & Fixtures                            | 5,702.47                    |                           | 5,702.47         |
| Equipment Other – At Cost                             | 54,442.07                   |                           | 54,442.07        |
| Less Accumulated Depreciation                         | -47,330.47                  |                           | -47,330.47       |
| Total Equipment Other                                 | 7,111.60                    |                           | 7,111.60         |
| <b>Total Property, Equipment &amp; Motor Vehicles</b> | <b>29,488.40</b>            |                           | <b>29,488.40</b> |

**Movements in carrying amounts**

|                                       | Motor<br>Vehicles | Furniture &<br>Fittings | Equipment<br>Other |
|---------------------------------------|-------------------|-------------------------|--------------------|
| Balance at beginning of year          | 20,854.32         | 243.54                  | 6,560.42           |
| Additions                             | 0.00              | 6,796.56                | 3,341.27           |
| Disposals                             | -518.18           | -1,155.27               | -125.45            |
| Accumulated Depreciation              | -3,661.81         | -182.36                 | -2664.64           |
| <b>Carrying amount at end of year</b> | <b>16,674.33</b>  | <b>5,702.47</b>         | <b>7,111.60</b>    |

***Note 9: Financial Instruments***

No particulars required.

***Note 10: Payables***

|                     | Unrestricted<br>Funds<br>\$ | Restricted<br>Funds<br>\$ | 2017<br>\$       |
|---------------------|-----------------------------|---------------------------|------------------|
| Sundry Creditors    | 494.43                      |                           | 494.43           |
| GST Liabilities     | -193.70                     |                           | -193.70          |
| Payroll Liabilities | 38,785.58                   |                           | -38,785.58       |
| Accrued Expenses    | 4,288.63                    |                           | 4,288.63         |
|                     | <b>43,374.94</b>            |                           | <b>43,374.94</b> |



**EAGLES RAPS INC.**  
**NOTES TO AND FORMING PART OF THE FINANCIAL STATEMENTS**  
**FOR THE YEAR ENDED 30 JUNE 2017**

***Note 11: Provisions***

|                     | Unrestricted<br>Funds<br>\$ | Restricted<br>Funds<br>\$ | 2017<br>\$       |
|---------------------|-----------------------------|---------------------------|------------------|
| Provision for Leave |                             | 32,940.51                 | 32,940.51        |
|                     |                             | <b>32,940.51</b>          | <b>32,940.51</b> |

***Note 12: Other Liabilities***

|     | Unrestricted<br>Funds<br>\$ | Restricted<br>Funds<br>\$ | 2017<br>\$ |
|-----|-----------------------------|---------------------------|------------|
| Nil |                             |                           |            |
|     |                             |                           |            |

***Note 13: Allocated Reserves***

|     | Balance 30<br>June 2017 | Net<br>movement in<br>Reserves |
|-----|-------------------------|--------------------------------|
| Nil |                         |                                |
|     |                         |                                |

***Note 14: Accumulated funds***

|   | Balance 30<br>June 2017 |
|---|-------------------------|
| Accumulated funds for year ended 30 June 2017             |                         |
| Accumulated funds at the beginning of the year            | \$153,452.24            |
| Operating profit  | -\$37,814.20            |
| <b>Accumulated funds at the end of the financial year</b> | <b>\$115,638.04</b>     |



**EAGLES RAPS INC.**  
**NOTES TO AND FORMING PART OF THE FINANCIAL STATEMENTS**  
**FOR THE YEAR ENDED 30 JUNE 2017**

***Note 15: Leases***

|                               | Unrestricted<br>Funds<br>\$ | Restricted<br>Funds<br>\$ | 2017<br>\$ |
|-------------------------------|-----------------------------|---------------------------|------------|
| ERYC's Youth Centre           |                             |                           |            |
| Payable Not later than 1 year | 278.13                      |                           | 278.13     |
|                               | 278.13                      |                           | 278.13     |

***Note 16: Interest Income***

|                              | Unrestricted<br>Funds<br>\$ | Restricted<br>Funds<br>\$ | 2017<br>\$ |
|------------------------------|-----------------------------|---------------------------|------------|
| Interest Income              |                             |                           |            |
| Trading Accounts             |                             |                           |            |
| CBA General Account          | 0.14                        |                           | 0.14       |
| St George                    | .04                         |                           | .04        |
| Bendigo Bank Project Account | 350.28                      |                           | 350.28     |
| Bendigo Bank Salaries        | 317.23                      |                           | 317.23     |
| CBA Gift Account             | 0.35                        |                           | 0.35       |
| Bendigo Bank Gift Account    | 530.86                      |                           | 530.86     |
|                              | 1,198.90                    |                           | 1,198.90   |

***Note 17: Insurance Cover***

|                                  | Unrestricted<br>Funds<br>\$ | Restricted<br>Funds<br>\$ | 2017<br>\$ |
|----------------------------------|-----------------------------|---------------------------|------------|
| Insurance premiums paid          |                             |                           |            |
| Motor Vehicle Insurance          | 2,329.64                    |                           | 2,329.64   |
| Public Liability Insurance       | 1,709.92                    |                           | 1,709.92   |
| Professional Indemnity Insurance | 1,106.65                    |                           | 1,106.65   |
| Worker's Compensation            | 2,952.35                    |                           | 2,952.35   |
|                                  | 8,098.56                    |                           | 8,098.56   |

***Note 18: Related Parties***

The names of the office-bearers who have held office during the financial year are: M Wynd, M Dent, R Moir and C Dent.

Members of the management committee are not entitled and did not receive benefits during the year other than:

- Reimbursement of legitimate expenses of the running of the organisation, and
- Salaries paid for employment as per employment contracts.

There were no loans in existence during the year or at balance date that were made, guaranteed or secured by the Association to the management committee, their partners, relatives under their control or significant influence.



**EAGLES RAPS INC.**  
**NOTES TO AND FORMING PART OF THE FINANCIAL STATEMENTS**  
**FOR THE YEAR ENDED 30 JUNE 2017**

**Note 19: Fundraising Appeals**

**Details of aggregate gross income and total expenses in fundraising appeals**

|  | Unrestricted<br>Funds<br>\$ | Restricted<br>Funds<br>\$ | 2017<br>\$        | 2016<br>\$        |
|--|-----------------------------|---------------------------|-------------------|-------------------|
| <b>Details of aggregate gross income and total expenses in fundraising appeals</b> |                             |                           |                   |                   |
| Gross proceeds from fundraising appeals  | 181,134.73                  |                           | 181,134.73        | 208,321.37        |
| Less: Total costs of fundraising   | 6,351.04                    |                           | 6,351.04          | 9,471.52          |
| <b>Net surplus from fundraising</b>  | <b>174,783.69</b>           |                           | <b>174,783.69</b> | <b>198,849.85</b> |

**Information on material matters**

Gross results, and the results of all appeals achieved the target returns under the *Charitable Fundraising Act*. The Annual Report discusses the operating facts, performance and strategies.

**Application of funds for charitable purposes**

During the year the Association achieved a net surplus of \$172,775.26 (2016, \$198,849.85) from fundraising activities defined under the *Charitable Fundraising Act*. All of these funds have been or will be expended in line with the objects of the Association

The Detailed Statement of Financial Performance details the expenditure.

**Fundraising appeals as classified by the *Charitable Fundraising Act* conducted during the financial year were:**

- Lily's Fundraising Evening
- Trivia Night

**Gross comparisons**

| A divided by B  | A<br>\$    | B<br>\$    | Surplus<br>\$ | 2017<br>% |
|---|------------|------------|---------------|-----------|
| Total cost of fundraising/Gross proceeds from fundraising   | 6,351.04   | 181,134.73 | 174,783.69    | 3.51      |
| Net surplus from fundraising/Gross proceeds from fundraising  | 174,783.69 | 181,134.73 | 0.00          | 96.49     |
| Total cost of services/Total expenditure  | 186,350.01 | 223,365.57 | 0.00          | 83.43     |
| Total cost of services/Total Income received  | 186,350.01 | 185,551.37 | 0.00          | 100.43    |
| <b>Specific appeal comparisons (Total cost/Gross proceeds)</b>  |            |            |               |           |
| Major Fundraising Evening (Lily's)  | 6,144.55   | 19,502.87  | 13,358.32     | 31.51     |
| Trivia Night  | 206.49     | 2,136.37   | 1,929.88      | 9.67      |
| <b>Gross comparisons including fundraising not covered by the <i>Charitable Fundraising Act</i> (includes unsolicited and members' donations and bequests).</b> |            |            |               |           |
| Total cost of all fundraising/Gross proceeds from all fundraising   | 6,351.04   | 181,134.73 | 174,783.69    | 3.51      |

**EAGLES RAPS INC.**  
**NOTES TO AND FORMING PART OF THE FINANCIAL STATEMENTS**



**FOR THE YEAR ENDED 30 JUNE 2017**

**Note 20: Members**

|                              | Unrestricted<br>Funds<br>\$ | Restricted<br>Funds<br>\$ | 2017<br>\$ | 2016<br>\$ |
|------------------------------|-----------------------------|---------------------------|------------|------------|
| Members                      |                             |                           |            |            |
| Donations by members         |                             |                           | 240.00     | 540.00     |
| Net surplus from fundraising |                             |                           | 240.00     | 540.00     |

**Note 20: Directors' and employees remuneration**

Staff are employed on individual management contracts, and under awards. Superannuation is paid in accordance with awards, management contracts or the superannuation guarantee legislation. Throughout the year the association employed five people, two full-time and three part-time.

The number of contract and award employees whose total actual remuneration including superannuation fell within the following bands.

|                                       | 2017         | 2016         |
|---------------------------------------|--------------|--------------|
| \$0.00 to \$20,000                    | 3            | 3            |
| \$20,001 to \$40,000                  |              |              |
| \$40,001 to \$60,000                  |              |              |
| \$60,000 to \$80,000                  | 2            | 2            |
| Total number of Employees             | 5            | 5            |
| Total remuneration to these employees | \$153,978.92 | \$153,978.92 |

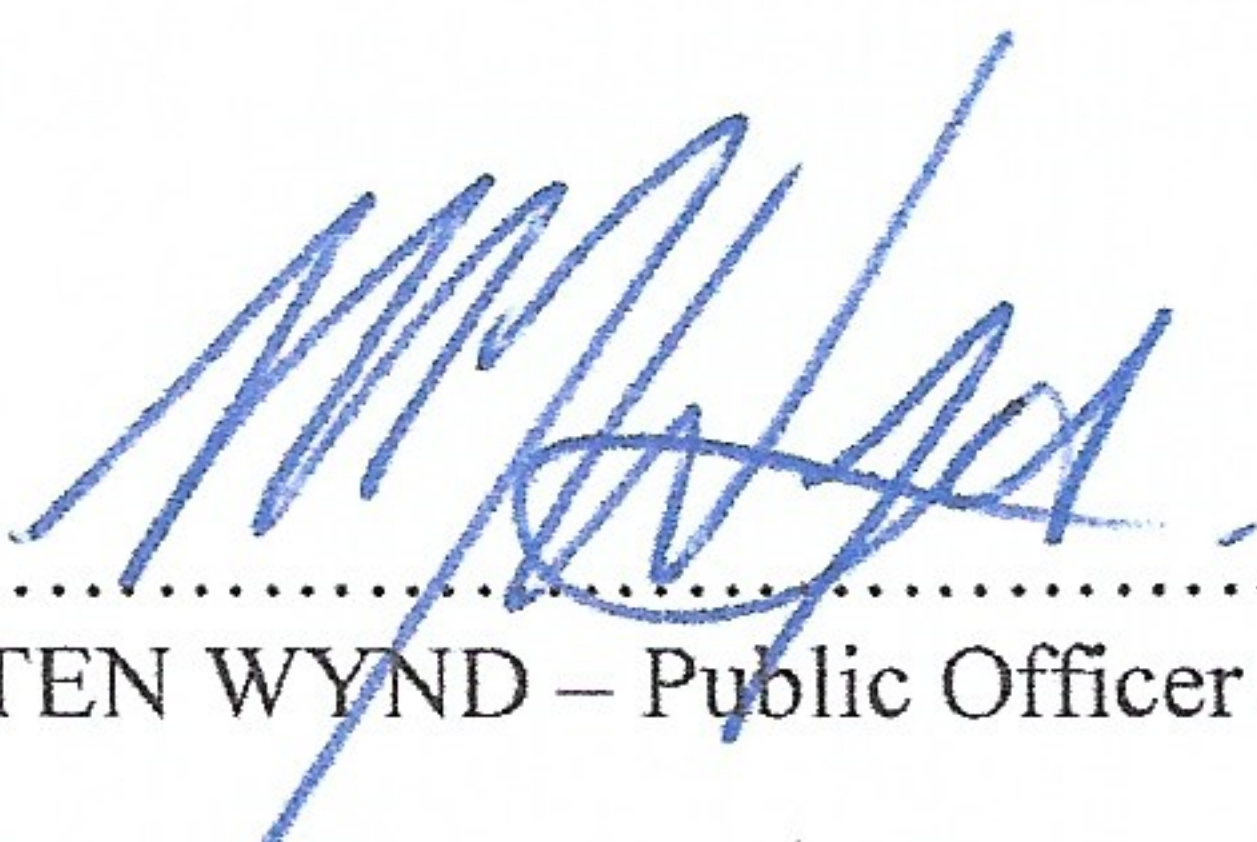


**EAGLES RAPS INC.  
DECLARATION BY PRESIDENT AND PUBLIC OFFICER  
IN RESPECT OF FUNDRAISING APPEALS**

**Declaration by the president of the governing body**

I, Marten Wynd, President and Public Officer of Eagles RAPS Inc. declare that in my opinion:

- a) the accounts give a true and fair view of all income and expenditure of Eagles RAPS Inc. with respect to fundraising appeals; and
- b) the balance sheet gives a true and fair view of the state of affairs with respect to fundraising appeals; and
- c) the provision of the *Charitable Fundraising Act 1991* and the regulations under that *Act* and the conditions attached to the authority have been complied with;
- d) the internal controls exercised by Eagles RAPS Inc. are appropriate and effective in accounting for all income received.

  
.....  
MARTEN WYND – Public Officer & President

Dated this 6th day of December 2017



**EAGLES RAPS INC**  
**STATEMENT BY MEMBERS OF THE COMMITTEE**

The committee has determined that the association is not a reporting entity and that this special purpose financial report should be prepared in accordance with the policies outlined in The Statement of Significant Accounting Policies in the Notes To and Forming Part of the Accounts in the financial statements.

In the opinion of the Committee, the financial report as set out on these pages:

1. Presents fairly the financial position of Eagles RAPS Inc. as at 30 June 2017 and its performance for the year ended on that date.
2. At the date of this statement, there are reasonable grounds to believe that Eagles RAPS Inc, will be able to pay its debts as and when they fall due.

This statement is made in accordance with a resolution of the Committee and is signed for and on behalf of the Committee by:

  
.....  
M. WYND – PRESIDENT

  
.....  
R. MOIR – SECRETARY

  
.....  
M. DENT – FINANCE MANAGER

Dated this 6th day of December 2017



**EAGLES RAPS INC.**  
**INDEPENDENT AUDIT REPORT TO THE MEMBERS**  
**OF EAGLES RAPS INC.**

**Scope**

We have audited the financial report, being a special purpose financial report comprising the Income and Expenditure Statement, Balance Sheet and Notes to the accounts of Eagles RAPS Inc. for the year ended 30 June 2017. The committee is responsible for the financial report and has determined that the accounting policies used and described in Note 1 to the financial statements which form part of the financial report, are appropriate to meet the requirements of the Associations Incorporation Act NSW and are appropriate to meet the needs of the members. We have conducted an independent audit of this financial report in order to express an opinion on it to the members of Eagles RAPS Inc. No opinion is expressed as to whether the accounting policies used are appropriate to the needs of the members.

The financial report has been prepared for the purpose of fulfilling the requirements of the Associations Incorporation Act NSW. We disclaim any assumption of responsibility for any reliance on this report or on the financial report to which it relates to any person other than the members, or for any purpose other than that for which it was prepared.

Our audit has been conducted in accordance with Australian Auditing Standards. Our procedures included examination, on a test basis, of evidence supporting the amounts and other disclosures in the financial report and the evaluation of significant accounting estimates. These procedures have been undertaken to form an opinion whether, in all material respect, the financial report is presented fairly in accordance with the accounting policies described in Note 1, so as to present a view which is consistent with our understanding of the Association's financial position and performance as represented by the results of its operations and its cash flows. These policies do not require the application of all Australian Accounting Standards and other mandatory professional reporting requirements in Australia.

The audit opinion expressed in this report has been formed on the above basis.

**Qualification**

It is not practical for the committee to establish control over fund raising activities prior to their initial entry in the accounting records, nor is it practical to circularise possible contributors to confirm that all such monies have been received and recorded. The examination relating to fund raising activities was, therefore, limited to the amounts recorded in the books of the committee and we have accepted such amounts as being the total revenue received from fund raising activities conducted by the committee.

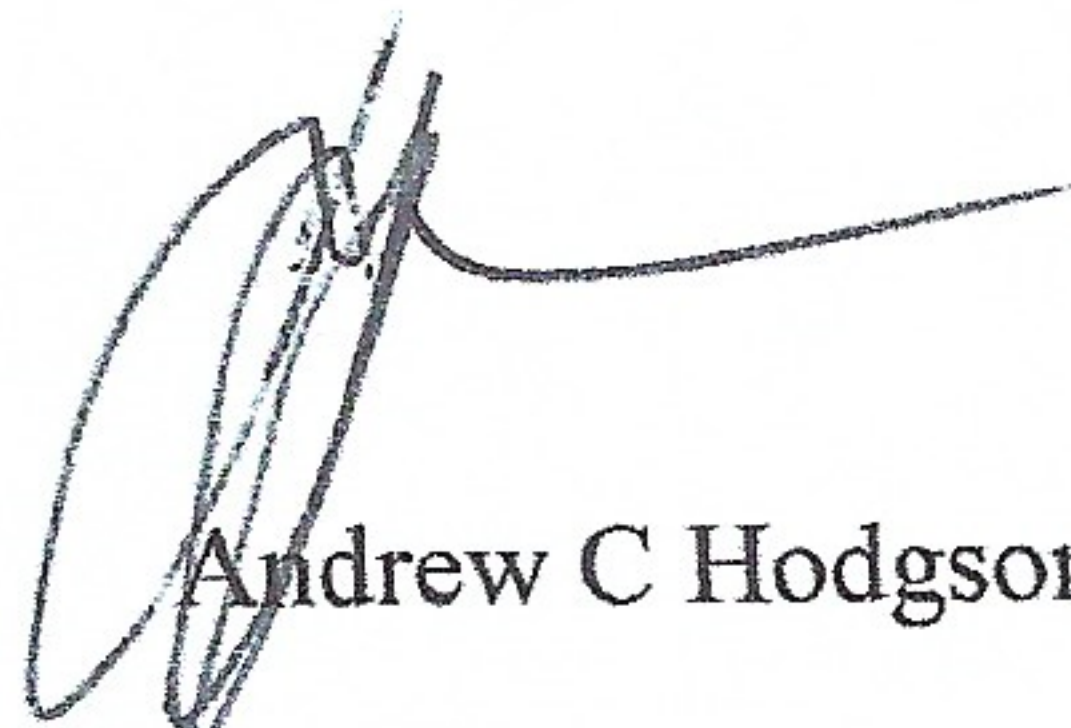


**EAGLES RAPS INC.**  
**INDEPENDENT AUDIT REPORT TO THE MEMBERS**  
**OF EAGLES RAPS INC.**

**Qualified Audit Opinion**

In our opinion, subject to the above qualification, the financial report presents fairly in accordance with the accounting policies described in Note 1 to the financial report the financial position of Eagles RAPS Inc. as at 30 June 2017 and the results of its operations for the year then ended.

**RNKL**



Andrew C Hodgson


Dated this 6th day of December 2017



**EAGLES RAPS INC**  
**CERTIFICATE BY MEMBERS OF THE COMMITTEE**

I, Marten Wynd, of 341 Blaxlands Ridge Road, Blaxlands Ridge, New South Wales, I, Robyn Moir of 14/10 Walker St, Werrington, New South Wales, and I, Mark Dent of 99 Mosaic Avenue, The Ponds, New South Wales, certify that:

- a) We are members of the committee of Eagles RAPS Inc.
- b) We attended the annual general meeting of the association held on 6 December 2017
- c) We are authorised by the attached resolution of the committee, to sign this certificate.
- d) This annual report was submitted to the members of the association at its annual general meeting.

  
.....  
M WYND – PRESIDENT

  
.....  
R. MOIR – SECRETARY

  
.....  
M. DENT – FINANCE MANAGER

Dated this 6th day of December 2017